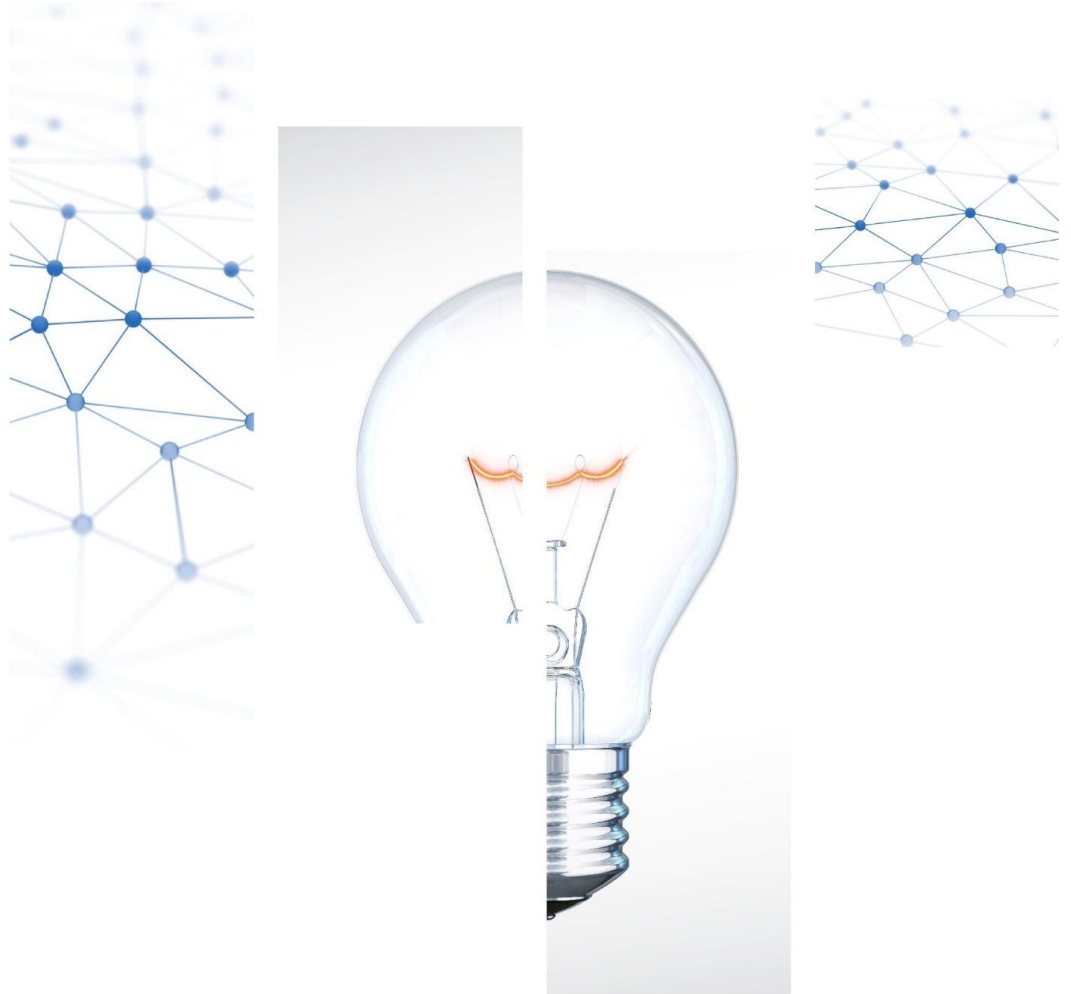


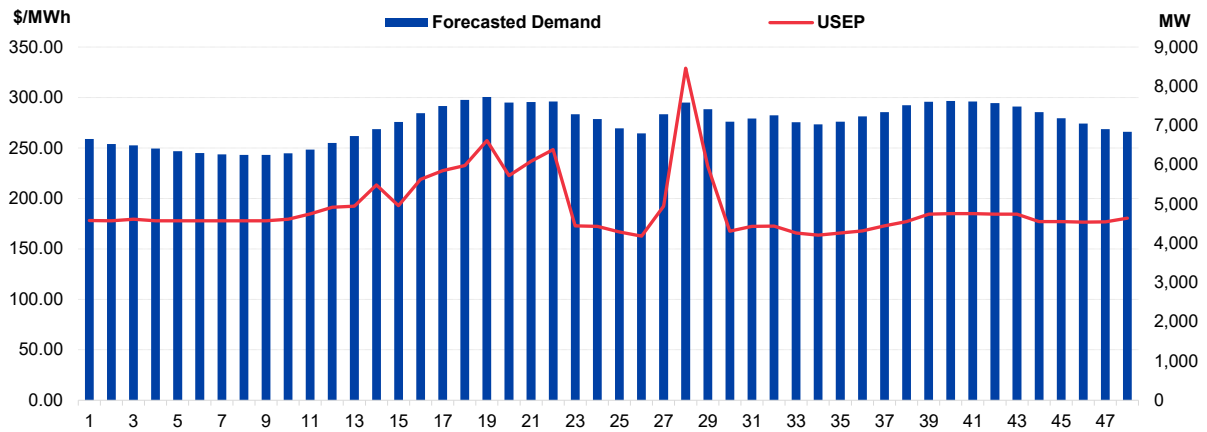
# Daily Trading Report

## 29 May 2026

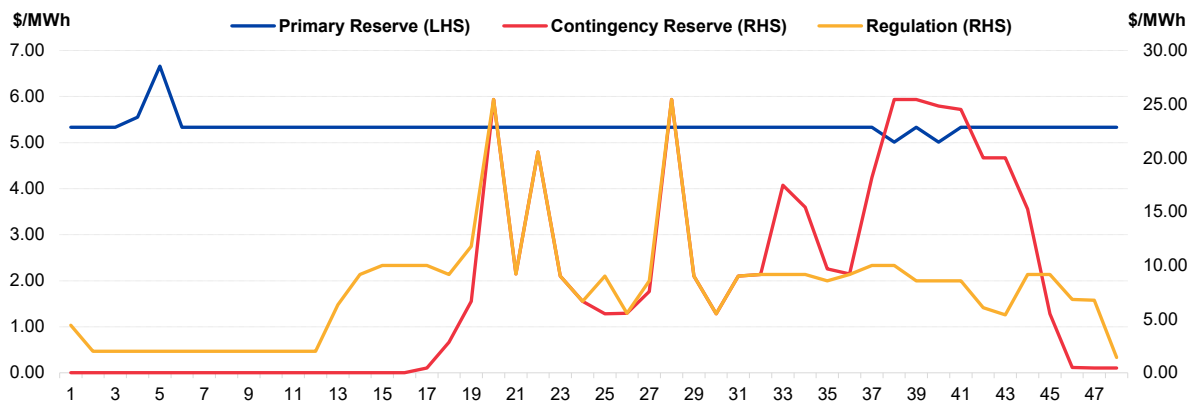


# Market Overview

**Figure 1: Forecasted Demand vs USEP**



**Figure 2: Periodic Ancillary Prices**



**Figure 3: Daily Data Comparison**

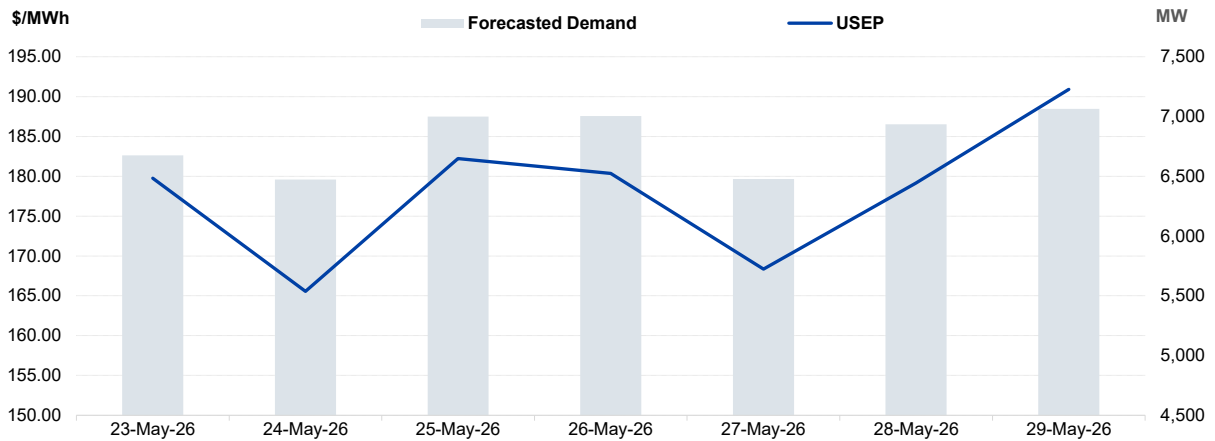
	Forecasted Demand (MW)	Total Supply (MW)	Energy Price (\$/MWh)
Weekday Ranking*	6 out of 5876	508 out of 5876	1171 out of 5876
Daily Average	7,063	8,266	190.90
Previous day	6,934	8,252	179.16
Change (%)	1.9%	0.2%	6.6%
Daily Max	7,726	8,550	329.02
Previous day	7,736	8,501	227.50
Change (%)	-0.1%	0.6%	44.6%
Daily Min	6,250	7,789	162.61
Previous day	6,181	7,768	148.71
Change (%)	1.1%	0.3%	9.3%

	Primary Reserve Price (\$/MWh)	Contingency Reserve Price (\$/MWh)	Regulation Price (\$/MWh)
Daily Average	5.35	8.12	7.74
Previous day	5.20	8.90	12.36
Change (%)	2.9%	-8.8%	-37.4%
Daily Max	6.66	25.44	25.44
Previous day	5.33	25.44	33.42
Change (%)	25.0%	0.0%	-23.9%
Daily Min	5.01	0.01	1.43
Previous day	0.01	0.01	0.01
Change (%)	50000.0%	0.0%	14200.0%

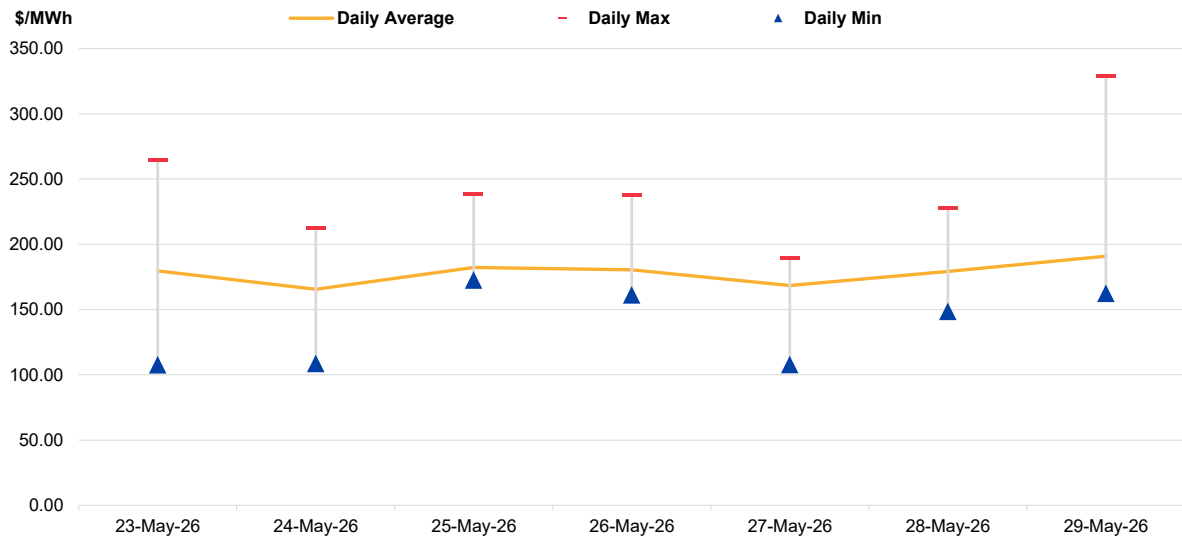
\*Ranking denotes the relative position of the market parameter since 1 Jan 2003.

# Market Overview

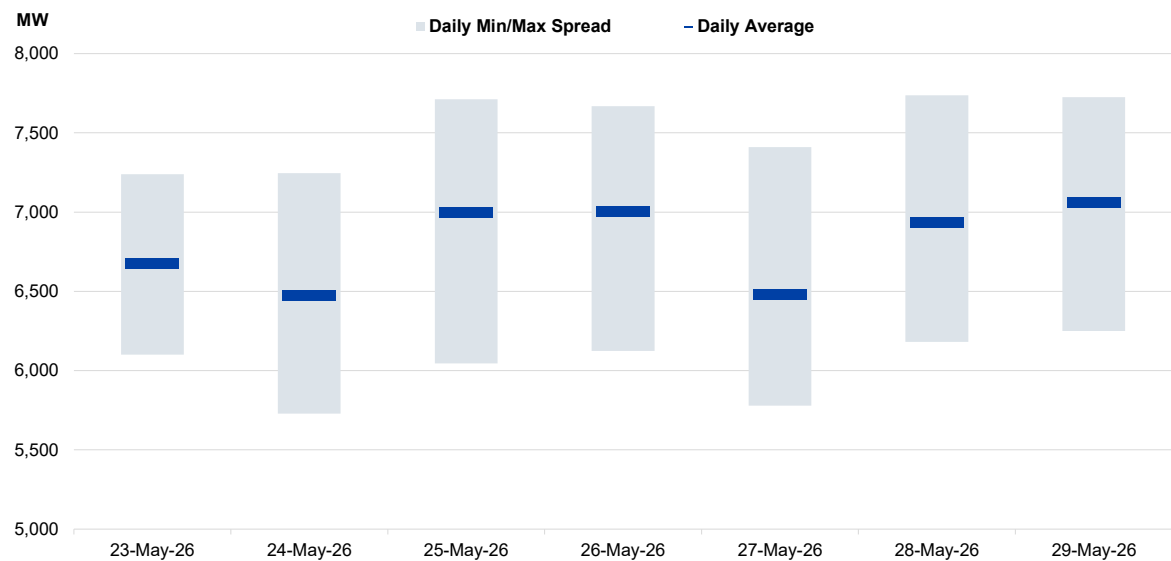
**Figure 4: Seven Days of Daily USEP vs Daily Forecasted Demand**



**Figure 5: Seven Days USEP Average-Max-Min**

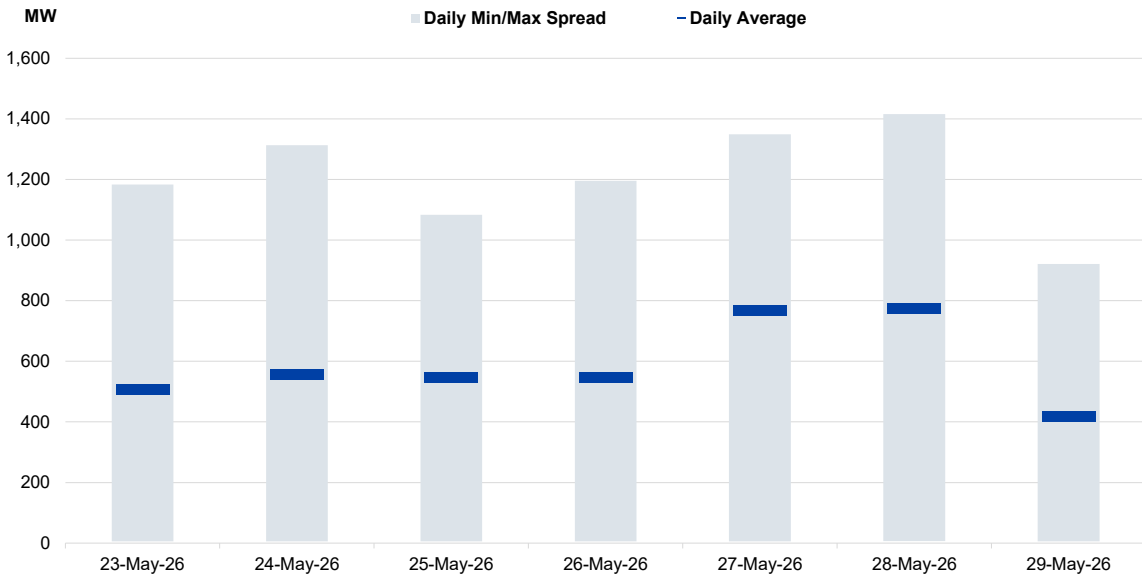


**Figure 6: Seven Days Forecasted Demand Average-Max-Min**



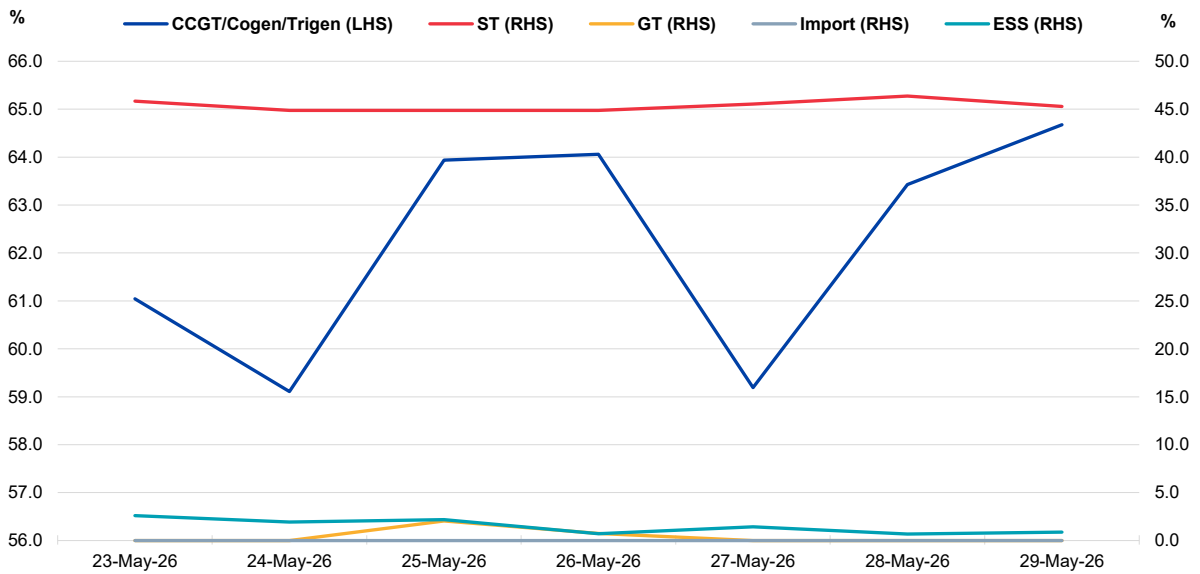
# Market Overview

**Figure 7: Seven Days Forecasted Solar Average-Max-Min**



Notes: Figure 7 reflects the daily forecasted solar for periods between 15 and 38 for the past seven days.

**Figure 8: Daily Generation Plant Utilization Rate**



# Market Overview

Figure 9: Daily Trading Data Table

	Sat 23-May-26	Sun 24-May-26	Mon 25-May-26	Tue 26-May-26	Wed 27-May-26	Thu 28-May-26	Fri 29-May-26
<b>Forecasted Demand (MW)</b>							
Daily Average	6,674	6,472	7,000	7,003	6,478	6,934	7,063
Daily Maximum	7,240	7,247	7,711	7,669	7,410	7,736	7,726
Daily Minimum	6,102	5,729	6,046	6,125	5,780	6,181	6,250
<b>Forecasted Solar (MW)</b>							
Daily Average	508	556	546	547	766	773	418
Daily Maximum	1,183	1,313	1,084	1,196	1,349	1,416	921
Daily Minimum	6	6	6	6	6	6	6
<b>Total Supply (MW)</b>							
Daily Average	7,799	7,783	8,271	8,314	8,099	8,252	8,266
Daily Maximum	8,141	8,123	8,971	8,619	8,427	8,501	8,550
Daily Minimum	7,423	7,405	7,588	7,822	7,745	7,768	7,789
<b>Energy Price (\$/MWh)</b>							
Daily Average	179.74	165.56	182.21	180.36	168.35	179.16	190.90
Daily Maximum	264.73	212.90	238.72	238.09	189.81	227.50	329.02
Daily Minimum	107.76	108.69	172.79	161.36	108.02	148.71	162.61
<b>Reserve &amp; Regulation Prices (\$/MWh)</b>							
Primary	4.73	5.66	4.97	5.09	5.02	5.20	5.35
Contingency	6.70	3.38	10.77	9.50	4.42	8.90	8.12
Regulation	11.27	10.08	14.05	13.17	7.31	12.36	7.74
<b>Reserve &amp; Regulation Requirement (MW)</b>							
Primary	304	320	272	297	329	289	339
Contingency	542	551	520	546	560	535	594
Regulation	99	99	99	99	99	99	99
<b>Generation (MW)</b>							
CCGT/Cogen/Trigen	6,551	6,344	6,862	6,875	6,352	6,807	6,941
ST	164	161	161	161	163	166	163
GT	0	0	21	8	0	0	0
Import	0	0	0	0	0	0	0
ESS	-5	2	-5	-1	-3	-1	-1

Notes: Figure 9 reflects the daily forecasted solar for periods between 15 and 38.

# Periodic Trading Data

Figure 10: Periodic Trading Data Table

Period	USEP (\$/MWh)	Forecasted Demand (MW)	Forecasted Solar (MW)	RUSEP (\$/MWh)	MAP (\$/MWh)	MAPT (\$/MWh)	TPC Applied
1	\$178.00	6,655	0	\$178.00	\$178.91	\$706.77	No
2	\$177.94	6,532	0	\$177.94	\$178.59	\$706.77	No
3	\$179.36	6,493	0	\$179.36	\$178.62	\$706.77	No
4	\$177.90	6,412	0	\$177.90	\$178.62	\$706.77	No
5	\$177.90	6,345	0	\$177.90	\$178.64	\$706.77	No
6	\$177.88	6,301	0	\$177.88	\$178.67	\$706.77	No
7	\$177.79	6,268	0	\$177.79	\$178.70	\$706.77	No
8	\$177.77	6,251	0	\$177.77	\$178.73	\$706.77	No
9	\$177.75	6,250	0	\$177.75	\$178.77	\$706.77	No
10	\$179.27	6,291	0	\$179.27	\$178.83	\$706.77	No
11	\$184.60	6,390	0	\$184.60	\$178.97	\$706.77	No
12	\$191.18	6,556	0	\$191.18	\$179.11	\$706.77	No
13	\$192.37	6,733	0	\$192.37	\$179.28	\$706.77	No
14	\$213.26	6,911	0	\$213.26	\$179.80	\$706.77	No
15	\$192.73	7,090	6	\$192.73	\$179.86	\$706.77	No
16	\$219.00	7,314	22	\$219.00	\$179.68	\$706.77	No
17	\$227.48	7,499	94	\$227.48	\$179.82	\$706.77	No
18	\$232.54	7,656	113	\$232.54	\$179.93	\$706.77	No
19	\$257.27	7,726	100	\$257.27	\$180.64	\$706.77	No
20	\$222.47	7,588	190	\$222.47	\$181.38	\$706.77	No
21	\$236.82	7,598	189	\$236.82	\$182.82	\$706.77	No
22	\$248.26	7,613	216	\$248.26	\$184.63	\$706.77	No
23	\$172.70	7,290	534	\$172.70	\$185.00	\$706.77	No
24	\$172.34	7,166	593	\$172.34	\$185.35	\$706.77	No
25	\$166.78	6,929	783	\$166.78	\$185.59	\$706.77	No
26	\$162.61	6,802	921	\$162.61	\$185.82	\$706.77	No
27	\$192.41	7,289	517	\$192.41	\$186.73	\$706.77	No
28	\$329.02	7,583	298	\$329.02	\$190.43	\$706.77	No
29	\$232.12	7,413	493	\$232.12	\$192.11	\$706.77	No
30	\$167.59	7,100	752	\$167.59	\$192.45	\$706.77	No
31	\$172.33	7,180	636	\$172.33	\$192.75	\$706.77	No
32	\$172.59	7,259	563	\$172.59	\$192.97	\$706.77	No
33	\$165.66	7,083	725	\$165.66	\$192.93	\$706.77	No
34	\$163.62	7,032	762	\$163.62	\$192.87	\$706.77	No
35	\$165.67	7,099	662	\$165.67	\$192.93	\$706.77	No
36	\$167.72	7,236	467	\$167.72	\$192.93	\$706.77	No
37	\$172.84	7,340	302	\$172.84	\$192.86	\$706.77	No
38	\$176.99	7,521	98	\$176.99	\$192.70	\$706.77	No
39	\$184.46	7,608	7	\$184.46	\$192.51	\$706.77	No
40	\$184.89	7,628	0	\$184.89	\$192.32	\$706.77	No
41	\$184.89	7,615	0	\$184.89	\$192.14	\$706.77	No
42	\$184.45	7,568	0	\$184.45	\$191.94	\$706.77	No
43	\$184.46	7,482	0	\$184.46	\$191.65	\$706.77	No
44	\$177.05	7,345	0	\$177.05	\$191.41	\$706.77	No
45	\$176.98	7,185	0	\$176.98	\$191.16	\$706.77	No
46	\$176.56	7,050	0	\$176.56	\$191.13	\$706.77	No
47	\$176.64	6,911	0	\$176.64	\$190.88	\$706.77	No
48	\$180.46	6,838	0	\$180.46	\$190.90	\$706.77	No

Notes: The USEP in Figure 10 may be subject to changes if it is deemed provisional. The final USEP is published on <https://www.nems.emcsg.com/nems-prices> > Market Data Download > Uniform Singapore Energy Price (USEP) and Demand Forecast on the 6th business day after the trading date.

# Periodic Trading Data

Figure 11 (cont'd): Periodic Trading Data Table

Period	CCGT/Cogen/Trigen	Generation (MW)			
		ST	GT	Import	ESS
1	6,528	164	0	0	0
2	6,403	164	0	0	0
3	6,363	164	0	0	0
4	6,282	164	0	0	0
5	6,214	164	0	0	0
6	6,170	164	0	0	0
7	6,136	164	0	0	0
8	6,119	164	0	0	0
9	6,118	164	0	0	0
10	6,160	164	0	0	0
11	6,259	164	0	0	0
12	6,426	164	0	0	0
13	6,606	164	0	0	0
14	6,785	164	0	0	0
15	6,966	164	0	0	0
16	7,192	164	0	0	0
17	7,371	164	0	0	8
18	7,530	164	0	0	8
19	7,600	164	0	0	8
20	7,469	164	0	0	0
21	7,478	164	0	0	1
22	7,493	164	0	0	2
23	7,168	164	0	0	0
24	7,044	164	0	0	0
25	6,829	161	0	0	-22
26	6,719	161	0	0	-39
27	7,170	161	0	0	0
28	7,465	161	0	0	2
29	7,295	161	0	0	0
30	6,978	161	0	0	0
31	7,060	161	0	0	0
32	7,139	161	0	0	0
33	6,962	161	0	0	0
34	6,910	161	0	0	0
35	6,978	161	0	0	0
36	7,117	161	0	0	0
37	7,222	161	0	0	0
38	7,403	161	0	0	0
39	7,492	161	0	0	0
40	7,513	161	0	0	0
41	7,500	161	0	0	0
42	7,453	161	0	0	0
43	7,365	161	0	0	0
44	7,226	161	0	0	0
45	7,065	161	0	0	0
46	6,929	161	0	0	0
47	6,788	161	0	0	0
48	6,714	161	0	0	0

**Disclaimer**

This Report is prepared and provided for general information purposes only. Information in this Report was obtained or derived from sources that the Energy Market Company Pte Ltd (EMC) considers reliable. All reasonable care has been taken to ensure that stated facts are accurate and opinions fair and reasonable at time of printing. EMC does not represent that information in this Report is accurate or complete and it should not be relied upon as such. In particular, in presentation of charts, certain assumptions were made which may not be stated therein. As such, EMC assumes no fiduciary responsibility or liability for any construction or interpretation you may take based on the information contained nor for any consequences, financial or otherwise, from transactions where information in this Report may be relied upon. You should make your own appraisal and should consult, to the extent necessary, your own professional advisors to ensure that any decision made based on the information in this Report is suitable for your circumstances.

If you have any specific queries about this Report or its contents, you should contact us at [marketoperations-B@emcsg.com](mailto:marketoperations-B@emcsg.com).