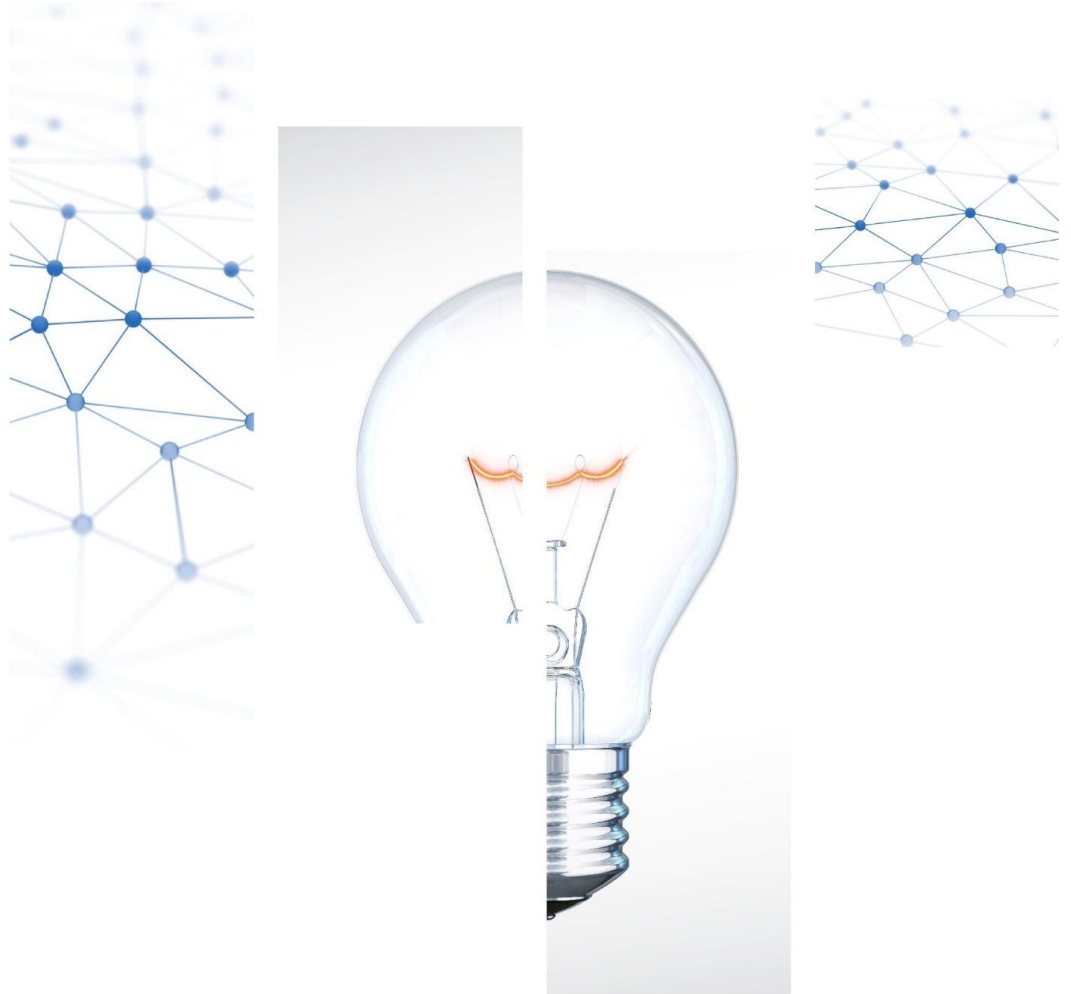


Daily Trading Report

28 May 2026



Market Overview

Figure 1: Forecasted Demand vs USEP

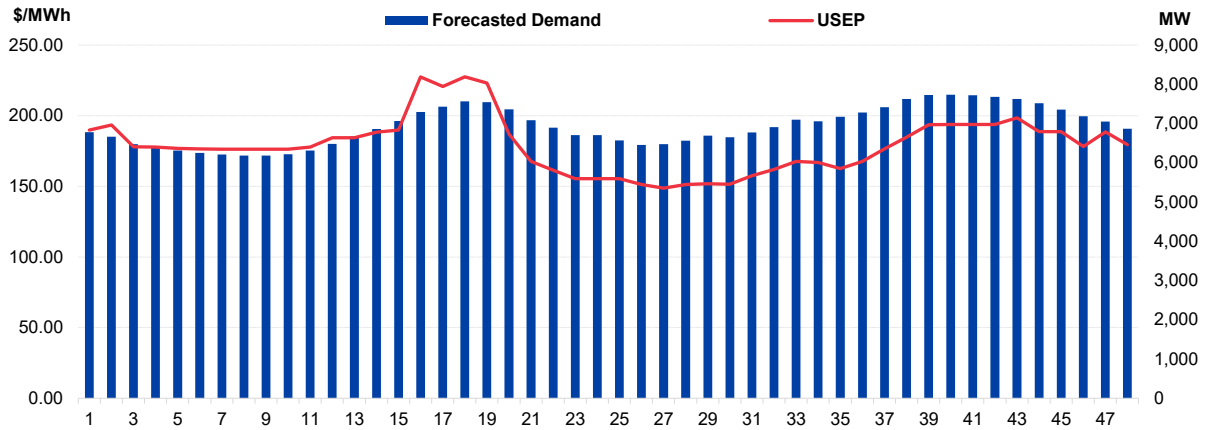


Figure 2: Periodic Ancillary Prices

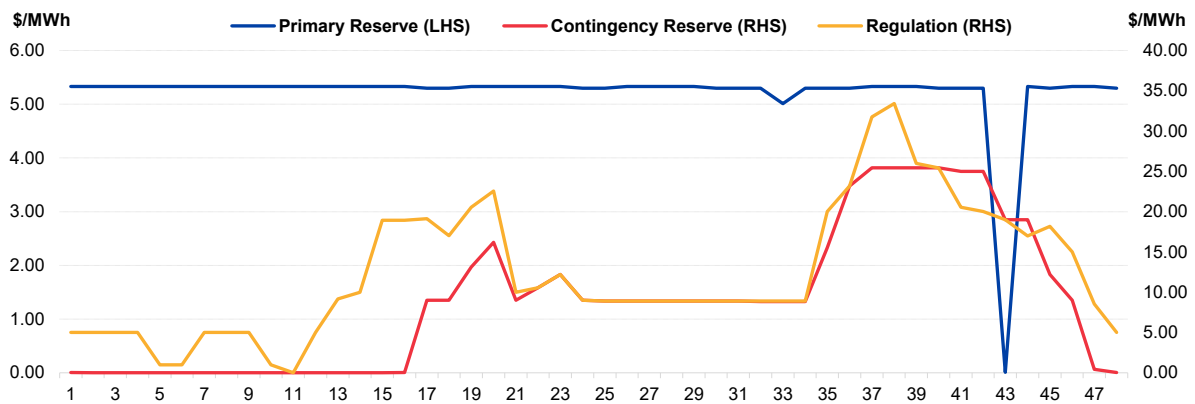


Figure 3: Daily Data Comparison

	Forecasted Demand (MW)	Total Supply (MW)	Energy Price (\$/MWh)
Weekday Ranking*	51 out of 5875	548 out of 5875	1406 out of 5875
Daily Average	6,934	8,252	179.16
Previous day	6,478	8,099	168.35
Change (%)	7.0%	1.9%	6.4%
Daily Max	7,736	8,501	227.50
Previous day	7,410	8,427	189.81
Change (%)	4.4%	0.9%	19.9%
Daily Min	6,181	7,768	148.71
Previous day	5,780	7,745	108.02
Change (%)	6.9%	0.3%	37.7%

	Primary Reserve Price (\$/MWh)	Contingency Reserve Price (\$/MWh)	Regulation Price (\$/MWh)
Daily Average	5.20	8.90	12.36
Previous day	5.02	4.42	7.31
Change (%)	3.6%	101.4%	69.1%
Daily Max	5.33	25.44	33.42
Previous day	5.55	25.44	20.01
Change (%)	-4.0%	0.0%	67.0%
Daily Min	0.01	0.01	0.01
Previous day	0.12	0.10	0.01
Change (%)	-91.7%	-90.0%	0.0%

*Ranking denotes the relative position of the market parameter since 1 Jan 2003.

Market Overview

Figure 4: Seven Days of Daily USEP vs Daily Forecasted Demand

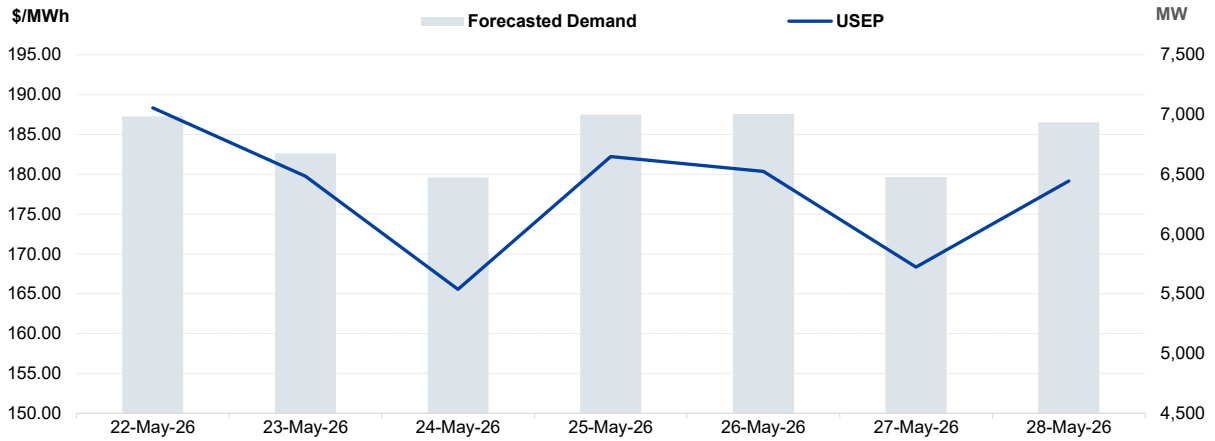


Figure 5: Seven Days USEP Average-Max-Min

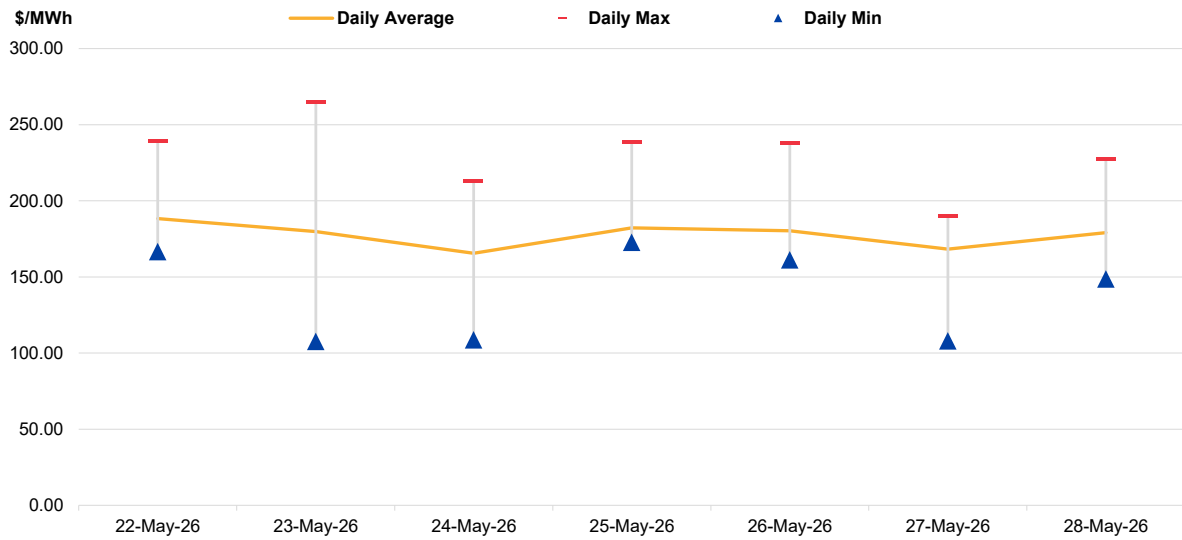
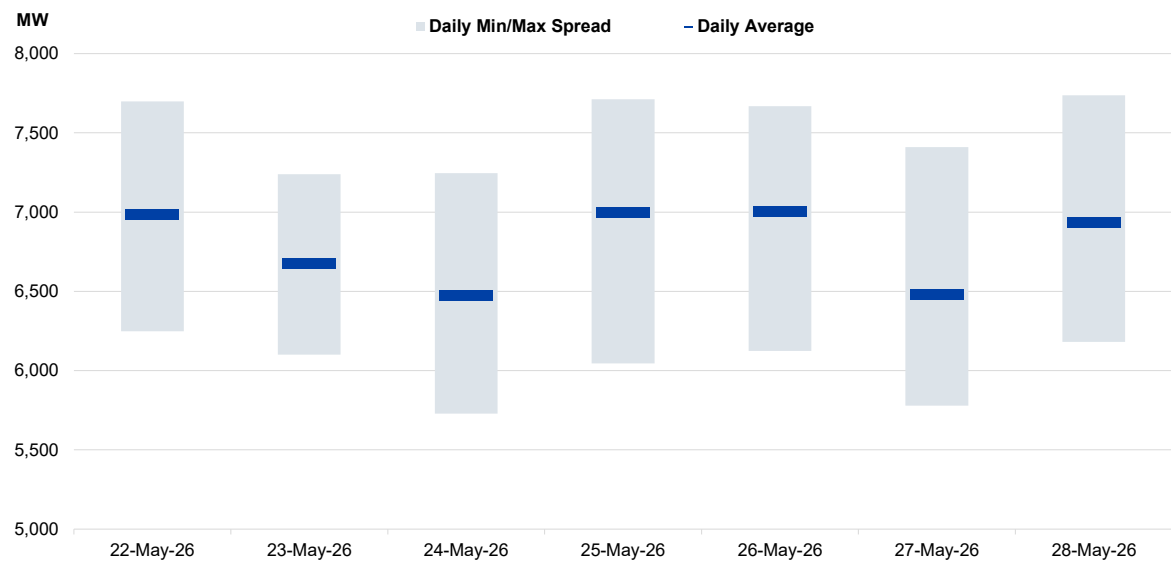
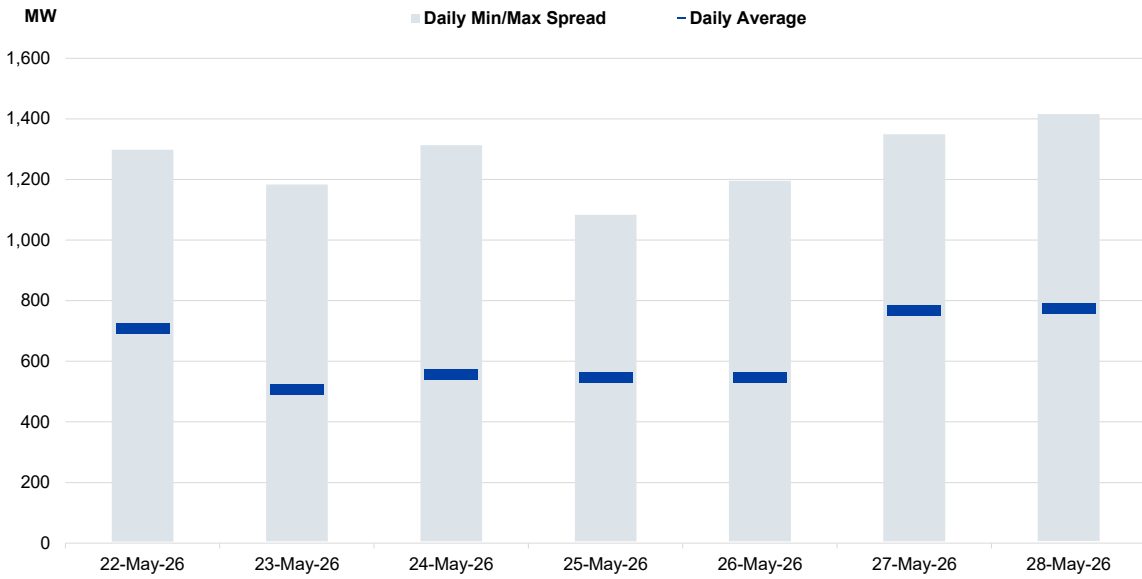


Figure 6: Seven Days Forecasted Demand Average-Max-Min



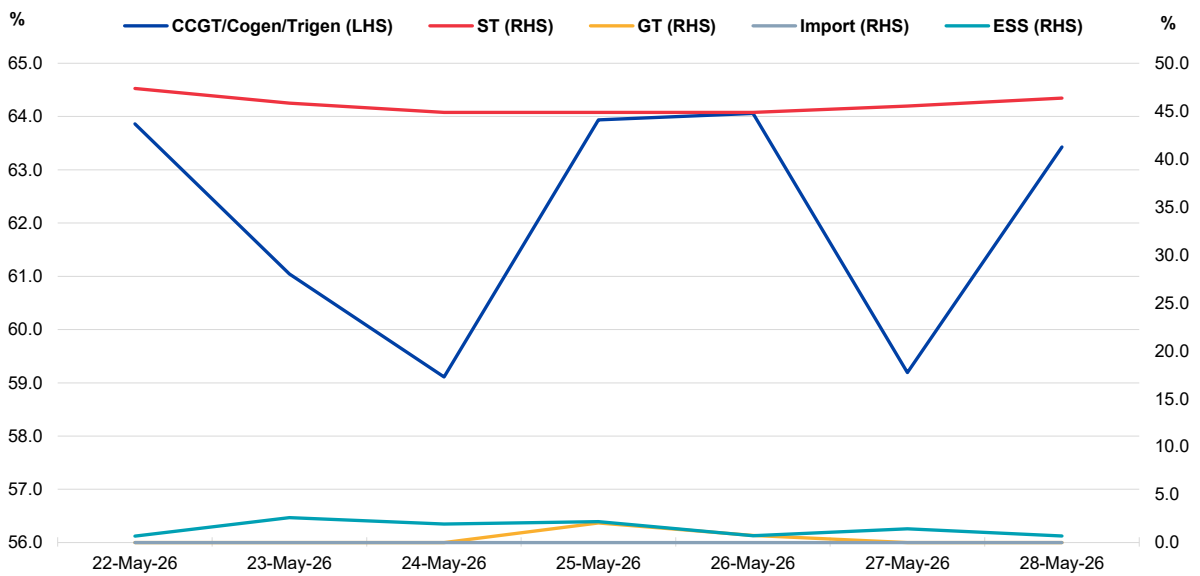
Market Overview

Figure 7: Seven Days Forecasted Solar Average-Max-Min



Notes: Figure 7 reflects the daily forecasted solar for periods between 15 and 38 for the past seven days.

Figure 8: Daily Generation Plant Utilization Rate



Market Overview

Figure 9: Daily Trading Data Table

	Fri 22-May-26	Sat 23-May-26	Sun 24-May-26	Mon 25-May-26	Tue 26-May-26	Wed 27-May-26	Thu 28-May-26
Forecasted Demand (MW)							
Daily Average	6,984	6,674	6,472	7,000	7,003	6,478	6,934
Daily Maximum	7,698	7,240	7,247	7,711	7,669	7,410	7,736
Daily Minimum	6,248	6,102	5,729	6,046	6,125	5,780	6,181
Forecasted Solar (MW)							
Daily Average	710	508	556	546	547	766	773
Daily Maximum	1,298	1,183	1,313	1,084	1,196	1,349	1,416
Daily Minimum	5	6	6	6	6	6	6
Total Supply (MW)							
Daily Average	8,171	7,799	7,783	8,271	8,314	8,099	8,252
Daily Maximum	8,637	8,141	8,123	8,971	8,619	8,427	8,501
Daily Minimum	7,639	7,423	7,405	7,588	7,822	7,745	7,768
Energy Price (\$/MWh)							
Daily Average	188.34	179.74	165.56	182.21	180.36	168.35	179.16
Daily Maximum	238.94	264.73	212.90	238.72	238.09	189.81	227.50
Daily Minimum	166.78	107.76	108.69	172.79	161.36	108.02	148.71
Reserve & Regulation Prices (\$/MWh)							
Primary	0.73	4.73	5.66	4.97	5.09	5.02	5.20
Contingency	0.91	6.70	3.38	10.77	9.50	4.42	8.90
Regulation	9.04	11.27	10.08	14.05	13.17	7.31	12.36
Reserve & Regulation Requirement (MW)							
Primary	180	304	320	272	297	329	289
Contingency	430	542	551	520	546	560	535
Regulation	99	99	99	99	99	99	99
Generation (MW)							
CCGT/Cogen/Trigen	6,854	6,551	6,344	6,862	6,875	6,352	6,807
ST	170	164	161	161	161	163	166
GT	0	0	0	21	8	0	0
Import	0	0	0	0	0	0	0
ESS	0	-5	2	-5	-1	-3	-1

Notes: Figure 9 reflects the daily forecasted solar for periods between 15 and 38.

Periodic Trading Data

Figure 10: Periodic Trading Data Table

Period	USEP (\$/MWh)	Forecasted Demand (MW)	Forecasted Solar (MW)	RUSEP (\$/MWh)	MAP (\$/MWh)	MAPT (\$/MWh)	TPC Applied
1	\$189.83	6,782	0	\$189.83	\$168.63	\$706.77	No
2	\$193.43	6,662	0	\$193.43	\$168.99	\$706.77	No
3	\$177.94	6,475	0	\$177.94	\$169.01	\$706.77	No
4	\$177.88	6,378	0	\$177.88	\$169.04	\$706.77	No
5	\$176.79	6,309	0	\$176.79	\$169.04	\$706.77	No
6	\$176.39	6,254	0	\$176.39	\$169.04	\$706.77	No
7	\$176.37	6,208	0	\$176.37	\$169.05	\$706.77	No
8	\$176.25	6,182	0	\$176.25	\$169.05	\$706.77	No
9	\$176.26	6,181	0	\$176.26	\$169.05	\$706.77	No
10	\$176.35	6,219	0	\$176.35	\$169.05	\$706.77	No
11	\$177.76	6,312	0	\$177.76	\$169.08	\$706.77	No
12	\$184.37	6,478	0	\$184.37	\$169.25	\$706.77	No
13	\$184.43	6,669	0	\$184.43	\$169.41	\$706.77	No
14	\$188.30	6,860	0	\$188.30	\$169.57	\$706.77	No
15	\$189.80	7,066	6	\$189.80	\$169.78	\$706.77	No
16	\$227.46	7,291	25	\$227.46	\$170.75	\$706.77	No
17	\$220.66	7,432	115	\$220.66	\$171.61	\$706.77	No
18	\$227.50	7,563	158	\$227.50	\$172.67	\$706.77	No
19	\$223.05	7,544	256	\$223.05	\$173.75	\$706.77	No
20	\$186.91	7,364	452	\$186.91	\$174.16	\$706.77	No
21	\$167.59	7,083	731	\$167.59	\$174.18	\$706.77	No
22	\$161.36	6,897	924	\$161.36	\$174.07	\$706.77	No
23	\$155.33	6,705	1,104	\$155.33	\$174.22	\$706.77	No
24	\$155.38	6,704	1,106	\$155.38	\$174.67	\$706.77	No
25	\$155.34	6,571	1,263	\$155.34	\$175.65	\$706.77	No
26	\$151.34	6,453	1,386	\$151.34	\$176.12	\$706.77	No
27	\$148.71	6,476	1,416	\$148.71	\$176.53	\$706.77	No
28	\$151.34	6,566	1,357	\$151.34	\$176.62	\$706.77	No
29	\$151.78	6,689	1,248	\$151.78	\$176.41	\$706.77	No
30	\$151.39	6,653	1,295	\$151.39	\$176.74	\$706.77	No
31	\$157.54	6,773	1,186	\$157.54	\$177.03	\$706.77	No
32	\$162.08	6,908	1,036	\$162.08	\$177.04	\$706.77	No
33	\$167.56	7,097	839	\$167.56	\$177.45	\$706.77	No
34	\$166.83	7,057	883	\$166.83	\$177.50	\$706.77	No
35	\$162.56	7,172	728	\$162.56	\$177.41	\$706.77	No
36	\$167.63	7,282	553	\$167.63	\$177.34	\$706.77	No
37	\$176.46	7,418	355	\$176.46	\$177.41	\$706.77	No
38	\$184.74	7,628	124	\$184.74	\$177.58	\$706.77	No
39	\$193.56	7,724	3	\$193.56	\$177.79	\$706.77	No
40	\$193.77	7,736	0	\$193.77	\$178.01	\$706.77	No
41	\$193.86	7,718	0	\$193.86	\$178.30	\$706.77	No
42	\$193.79	7,682	0	\$193.79	\$178.52	\$706.77	No
43	\$198.52	7,626	0	\$198.52	\$178.83	\$706.77	No
44	\$188.67	7,516	0	\$188.67	\$178.94	\$706.77	No
45	\$188.62	7,355	0	\$188.62	\$179.10	\$706.77	No
46	\$178.11	7,186	0	\$178.11	\$179.13	\$706.77	No
47	\$188.49	7,051	0	\$188.49	\$179.37	\$706.77	No
48	\$179.51	6,869	0	\$179.51	\$179.16	\$706.77	No

Notes: The USEP in Figure 10 may be subject to changes if it is deemed provisional. The final USEP is published on <https://www.nems.emcsg.com/nems-prices> > Market Data Download > Uniform Singapore Energy Price (USEP) and Demand Forecast on the 6th business day after the trading date.

Periodic Trading Data

Figure 11 (cont'd): Periodic Trading Data Table

Period	Generation (MW)				
	CCGT/Cogen/Trigen	ST	GT	Import	ESS
1	6,650	170	0	0	0
2	6,529	170	0	0	0
3	6,340	170	0	0	0
4	6,241	170	0	0	0
5	6,172	170	0	0	0
6	6,117	170	0	0	0
7	6,070	170	0	0	0
8	6,044	170	0	0	0
9	6,042	170	0	0	0
10	6,081	170	0	0	0
11	6,174	170	0	0	0
12	6,342	170	0	0	0
13	6,534	170	0	0	0
14	6,728	170	0	0	0
15	6,936	170	0	0	0
16	7,156	170	0	0	8
17	7,306	170	0	0	0
18	7,429	170	0	0	8
19	7,412	170	0	0	6
20	7,243	164	0	0	0
21	6,960	164	0	0	0
22	6,772	164	0	0	0
23	6,606	164	0	0	-27
24	6,592	164	0	0	-14
25	6,443	164	0	0	0
26	6,324	164	0	0	0
27	6,348	164	0	0	0
28	6,439	164	0	0	-1
29	6,564	164	0	0	-2
30	6,528	164	0	0	-1
31	6,647	164	0	0	-1
32	6,784	164	0	0	-1
33	6,973	164	0	0	0
34	6,933	164	0	0	0
35	7,049	164	0	0	0
36	7,160	164	0	0	0
37	7,298	164	0	0	0
38	7,510	164	0	0	0
39	7,607	164	0	0	0
40	7,620	164	0	0	0
41	7,602	164	0	0	0
42	7,566	164	0	0	0
43	7,510	164	0	0	0
44	7,397	164	0	0	0
45	7,235	164	0	0	0
46	7,065	164	0	0	0
47	6,927	164	0	0	0
48	6,743	164	0	0	0

Disclaimer

This Report is prepared and provided for general information purposes only. Information in this Report was obtained or derived from sources that the Energy Market Company Pte Ltd (EMC) considers reliable. All reasonable care has been taken to ensure that stated facts are accurate and opinions fair and reasonable at time of printing. EMC does not represent that information in this Report is accurate or complete and it should not be relied upon as such. In particular, in presentation of charts, certain assumptions were made which may not be stated therein. As such, EMC assumes no fiduciary responsibility or liability for any construction or interpretation you may take based on the information contained nor for any consequences, financial or otherwise, from transactions where information in this Report may be relied upon. You should make your own appraisal and should consult, to the extent necessary, your own professional advisors to ensure that any decision made based on the information in this Report is suitable for your circumstances.

If you have any specific queries about this Report or its contents, you should contact us at marketoperations-B@emcsg.com.