

Daily Trading Report

26 May 2026



Market Overview

Figure 1: Forecasted Demand vs USEP

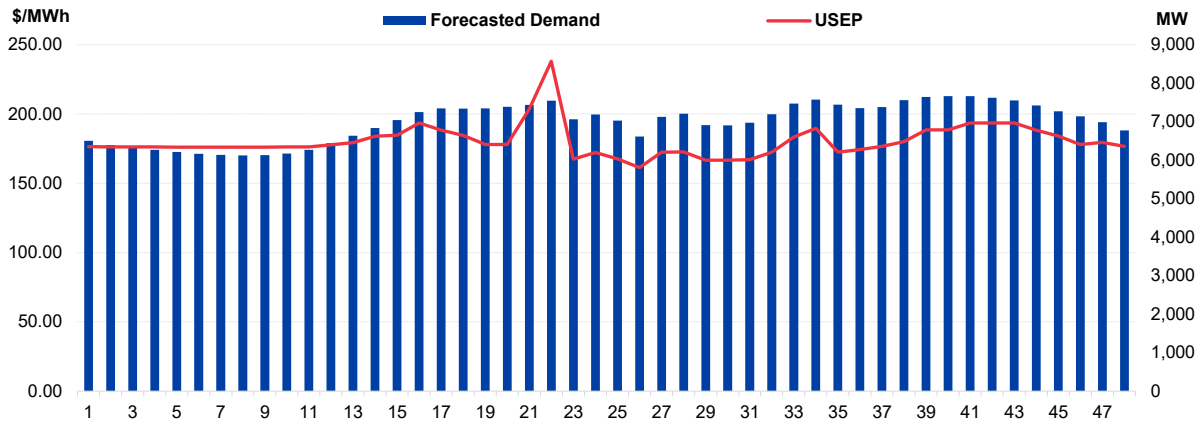


Figure 2: Periodic Ancillary Prices

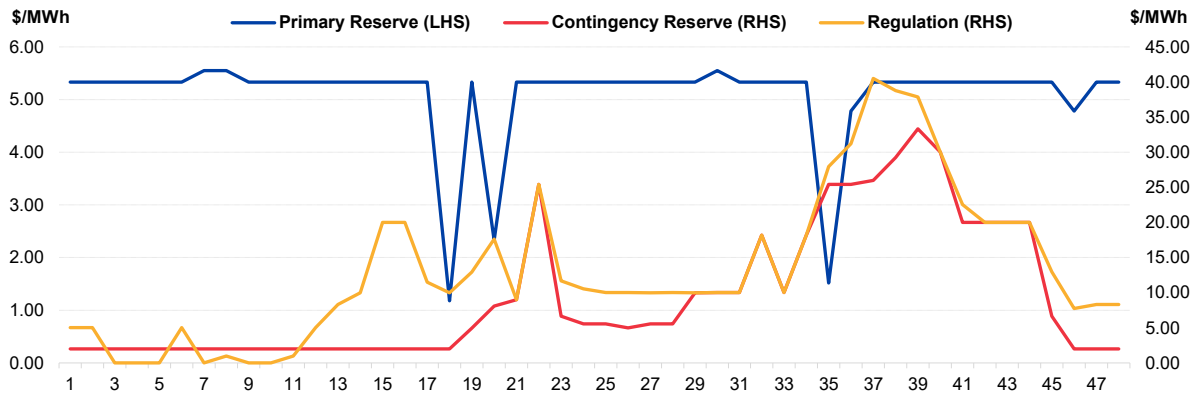


Figure 3: Daily Data Comparison

	Forecasted Demand (MW)	Total Supply (MW)	Energy Price (\$/MWh)
Weekday Ranking*	20 out of 5874	388 out of 5874	1387 out of 5874
Daily Average	7,003	8,314	180.36
Previous day	7,000	8,271	182.21
Change (%)	0.0%	0.5%	-1.0%
Daily Max	7,669	8,619	238.09
Previous day	7,711	8,971	238.72
Change (%)	-0.6%	-3.9%	-0.3%
Daily Min	6,125	7,822	161.36
Previous day	6,046	7,588	172.79
Change (%)	1.3%	3.1%	-6.6%

	Primary Reserve Price (\$/MWh)	Contingency Reserve Price (\$/MWh)	Regulation Price (\$/MWh)
Daily Average	5.09	9.50	13.17
Previous day	4.97	10.77	14.05
Change (%)	2.4%	-11.8%	-6.3%
Daily Max	5.55	33.33	40.51
Previous day	11.84	48.54	46.26
Change (%)	-53.1%	-31.3%	-12.4%
Daily Min	1.18	2.00	0.01
Previous day	0.01	0.05	0.01
Change (%)	11700.0%	3900.0%	0.0%

*Ranking denotes the relative position of the market parameter since 1 Jan 2003.

Market Overview

Figure 4: Seven Days of Daily USEP vs Daily Forecasted Demand

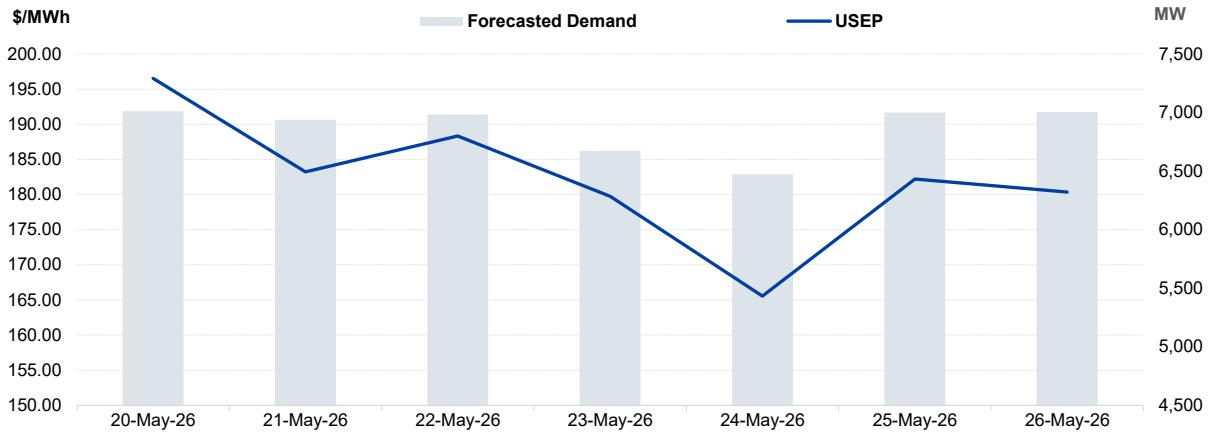


Figure 5: Seven Days USEP Average-Max-Min

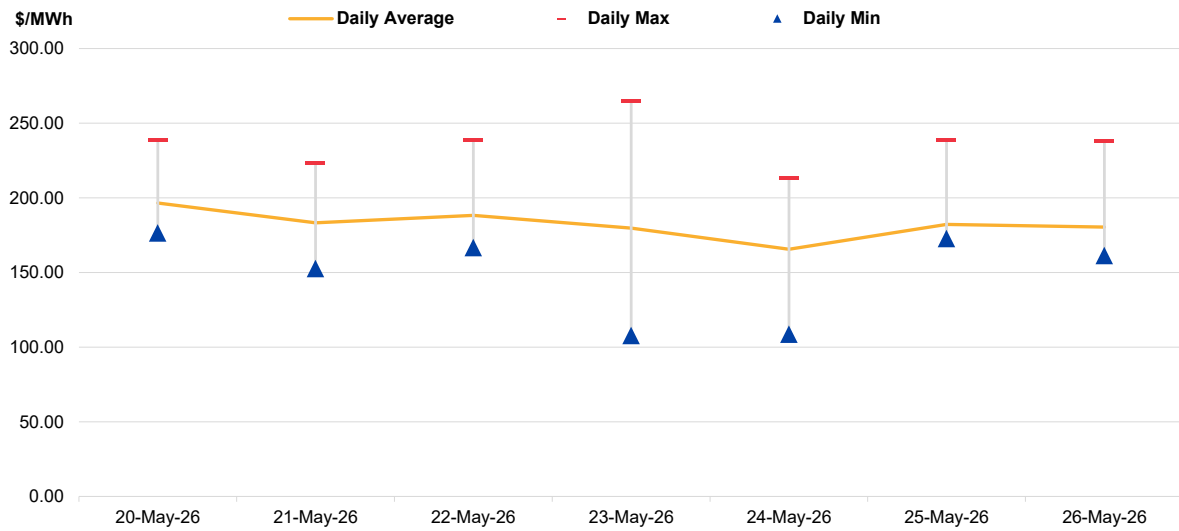
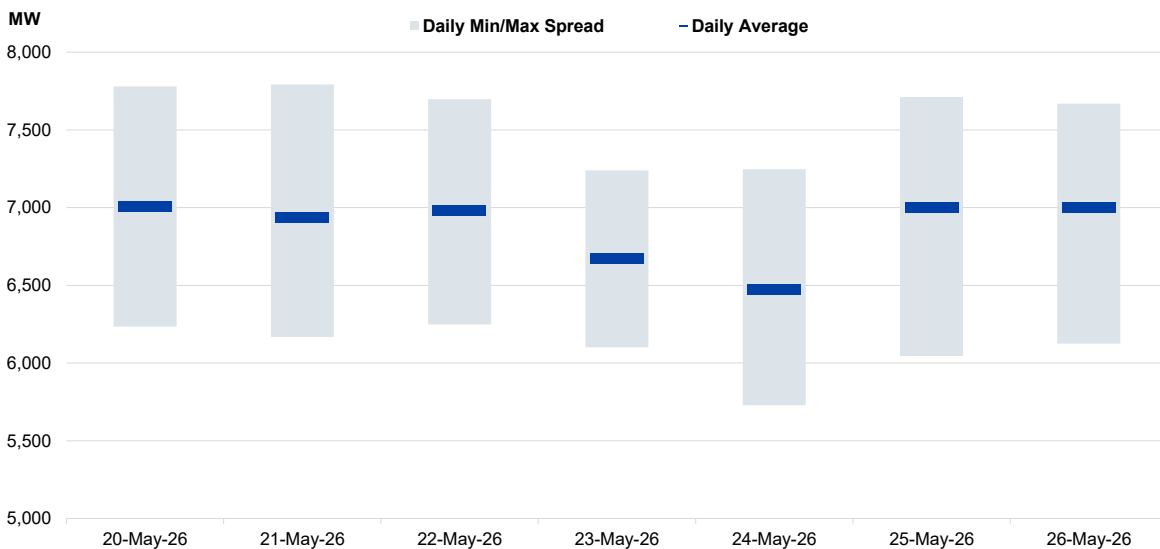
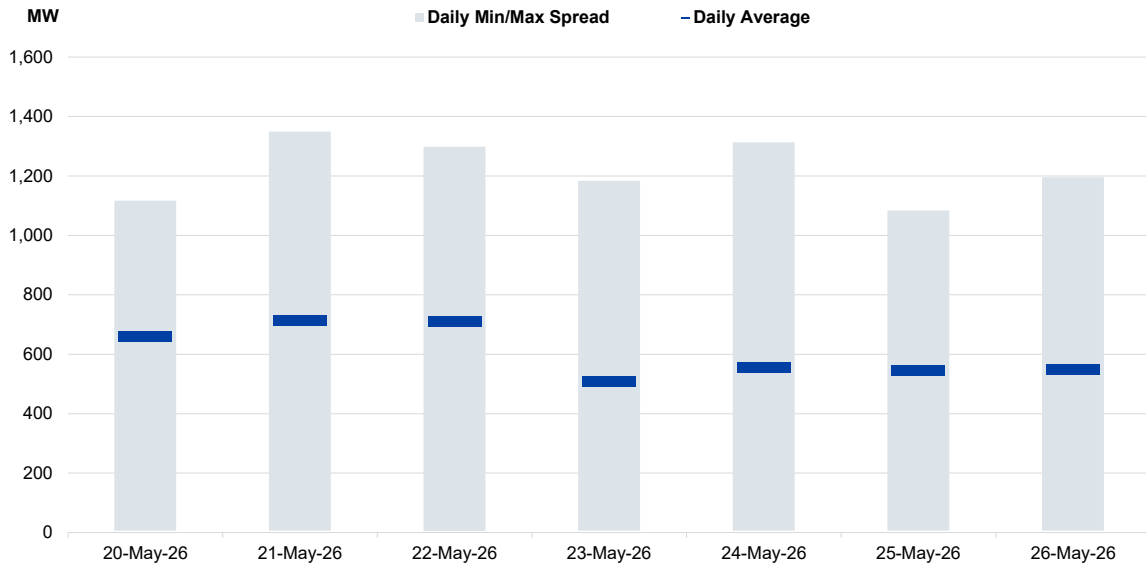


Figure 6: Seven Days Forecasted Demand Average-Max-Min



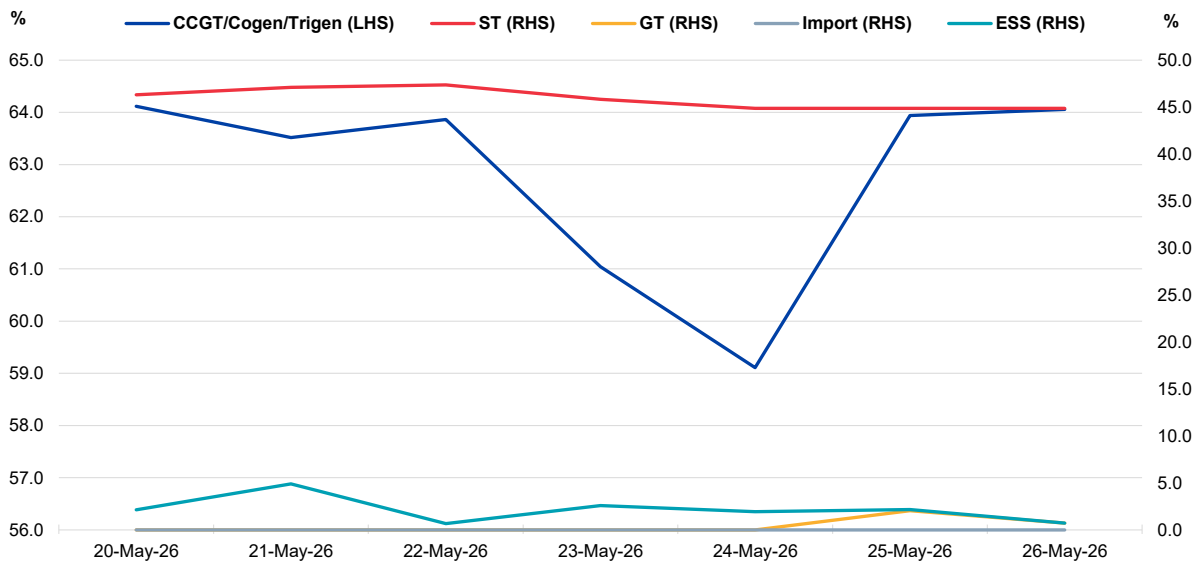
Market Overview

Figure 7: Seven Days Forecasted Solar Average-Max-Min



Notes: Figure 7 reflects the daily forecasted solar for periods between 15 and 38 for the past seven days.

Figure 8: Daily Generation Plant Utilization Rate



Market Overview

Figure 9: Daily Trading Data Table

	Wed 20-May-26	Thu 21-May-26	Fri 22-May-26	Sat 23-May-26	Sun 24-May-26	Mon 25-May-26	Tue 26-May-26
Forecasted Demand (MW)							
Daily Average	7,011	6,938	6,984	6,674	6,472	7,000	7,003
Daily Maximum	7,780	7,791	7,698	7,240	7,247	7,711	7,669
Daily Minimum	6,234	6,169	6,248	6,102	5,729	6,046	6,125
Forecasted Solar (MW)							
Daily Average	660	712	710	508	556	546	547
Daily Maximum	1,116	1,349	1,298	1,183	1,313	1,084	1,196
Daily Minimum	6	6	5	6	6	6	6
Total Supply (MW)							
Daily Average	7,963	8,046	8,171	7,799	7,783	8,271	8,314
Daily Maximum	8,277	8,350	8,637	8,141	8,123	8,971	8,619
Daily Minimum	7,569	7,675	7,639	7,423	7,405	7,588	7,822
Energy Price (\$/MWh)							
Daily Average	196.53	183.25	188.34	179.74	165.56	182.21	180.36
Daily Maximum	238.80	223.24	238.94	264.73	212.90	238.72	238.09
Daily Minimum	176.52	152.62	166.78	107.76	108.69	172.79	161.36
Reserve & Regulation Prices (\$/MWh)							
Primary	0.49	0.68	0.73	4.73	5.66	4.97	5.09
Contingency	3.70	11.84	0.91	6.70	3.38	10.77	9.50
Regulation	17.11	17.62	9.04	11.27	10.08	14.05	13.17
Reserve & Regulation Requirement (MW)							
Primary	171	175	180	304	320	272	297
Contingency	419	420	430	542	551	520	546
Regulation	99	99	99	99	99	99	99
Generation (MW)							
CCGT/Cogen/Trigen	6,881	6,817	6,854	6,551	6,344	6,862	6,875
ST	166	169	170	164	161	161	161
GT	0	0	0	0	0	21	8
Import	0	0	0	0	0	0	0
ESS	5	-8	0	-5	2	-5	-1

Notes: Figure 9 reflects the daily forecasted solar for periods between 15 and 38.

Periodic Trading Data

Figure 10: Periodic Trading Data Table

Period	USEP (\$/MWh)	Forecasted Demand (MW)	Forecasted Solar (MW)	RUSEP (\$/MWh)	MAP (\$/MWh)	MAPT (\$/MWh)	TPC Applied
1	\$176.41	6,506	0	\$176.41	\$182.04	\$706.77	No
2	\$176.35	6,393	0	\$176.35	\$182.01	\$706.77	No
3	\$176.31	6,346	0	\$176.31	\$182.01	\$706.77	No
4	\$176.26	6,269	0	\$176.26	\$182.00	\$706.77	No
5	\$176.15	6,216	0	\$176.15	\$182.00	\$706.77	No
6	\$176.14	6,168	0	\$176.14	\$181.99	\$706.77	No
7	\$176.13	6,137	0	\$176.13	\$181.99	\$706.77	No
8	\$176.13	6,125	0	\$176.13	\$181.99	\$706.77	No
9	\$176.13	6,132	0	\$176.13	\$181.99	\$706.77	No
10	\$176.24	6,172	0	\$176.24	\$181.99	\$706.77	No
11	\$176.35	6,270	0	\$176.35	\$181.99	\$706.77	No
12	\$177.81	6,445	0	\$177.81	\$182.02	\$706.77	No
13	\$179.30	6,638	0	\$179.30	\$182.07	\$706.77	No
14	\$183.96	6,837	0	\$183.96	\$182.17	\$706.77	No
15	\$184.72	7,045	6	\$184.72	\$182.23	\$706.77	No
16	\$193.51	7,254	25	\$193.51	\$182.34	\$706.77	No
17	\$188.44	7,350	125	\$188.44	\$182.35	\$706.77	No
18	\$184.51	7,338	304	\$184.51	\$182.37	\$706.77	No
19	\$178.03	7,348	436	\$178.03	\$182.37	\$706.77	No
20	\$177.98	7,386	521	\$177.98	\$182.40	\$706.77	No
21	\$203.59	7,439	482	\$203.59	\$182.90	\$706.77	No
22	\$238.09	7,550	341	\$238.09	\$184.17	\$706.77	No
23	\$167.57	7,067	769	\$167.57	\$183.98	\$706.77	No
24	\$172.37	7,187	609	\$172.37	\$183.95	\$706.77	No
25	\$167.76	7,031	738	\$167.76	\$183.82	\$706.77	No
26	\$161.36	6,620	1,196	\$161.36	\$183.58	\$706.77	No
27	\$172.51	7,128	775	\$172.51	\$183.57	\$706.77	No
28	\$172.75	7,213	719	\$172.75	\$183.54	\$706.77	No
29	\$166.78	6,911	1,038	\$166.78	\$183.41	\$706.77	No
30	\$166.76	6,903	1,081	\$166.76	\$183.26	\$706.77	No
31	\$167.19	6,976	1,026	\$167.19	\$181.77	\$706.77	No
32	\$172.55	7,198	794	\$172.55	\$180.39	\$706.77	No
33	\$183.39	7,473	489	\$183.39	\$180.50	\$706.77	No
34	\$189.68	7,573	372	\$189.68	\$180.74	\$706.77	No
35	\$172.47	7,447	450	\$172.47	\$180.67	\$706.77	No
36	\$174.46	7,353	431	\$174.46	\$180.45	\$706.77	No
37	\$176.70	7,381	303	\$176.70	\$180.34	\$706.77	No
38	\$180.05	7,560	111	\$180.05	\$180.17	\$706.77	No
39	\$188.51	7,648	14	\$188.51	\$180.14	\$706.77	No
40	\$188.61	7,669	0	\$188.61	\$180.11	\$706.77	No
41	\$193.57	7,664	0	\$193.57	\$180.11	\$706.77	No
42	\$193.58	7,626	0	\$193.58	\$180.11	\$706.77	No
43	\$193.57	7,558	0	\$193.57	\$180.11	\$706.77	No
44	\$188.34	7,424	0	\$188.34	\$180.18	\$706.77	No
45	\$184.14	7,272	0	\$184.14	\$180.28	\$706.77	No
46	\$178.09	7,141	0	\$178.09	\$180.31	\$706.77	No
47	\$179.53	6,989	0	\$179.53	\$180.36	\$706.77	No
48	\$176.62	6,772	0	\$176.62	\$180.36	\$706.77	No

Notes: The USEP in Figure 10 may be subject to changes if it is deemed provisional. The final USEP is published on <https://www.nems.emcsg.com/nems-prices> > Market Data Download > Uniform Singapore Energy Price (USEP) and Demand Forecast on the 6th business day after the trading date.

Periodic Trading Data

Figure 11 (cont'd): Periodic Trading Data Table

Period	Generation (MW)				
	CCGT/Cogen/Trigen	ST	GT	Import	ESS
1	6,379	161	0	0	0
2	6,265	161	0	0	0
3	6,218	161	0	0	0
4	6,140	161	0	0	0
5	6,086	161	0	0	0
6	6,038	161	0	0	0
7	6,006	161	0	0	0
8	5,995	161	0	0	0
9	6,001	161	0	0	0
10	6,042	161	0	0	0
11	6,141	161	0	0	0
12	6,317	161	0	0	0
13	6,512	161	0	0	0
14	6,713	161	0	0	0
15	6,923	161	0	0	0
16	7,135	161	0	0	0
17	7,231	161	0	0	0
18	7,219	161	0	0	0
19	7,228	161	0	0	0
20	7,267	161	0	0	0
21	7,320	161	0	0	1
22	7,431	161	0	0	2
23	6,947	161	0	0	0
24	7,067	161	0	0	0
25	6,909	161	0	0	0
26	6,546	161	0	0	-51
27	7,008	161	0	0	0
28	7,093	161	0	0	0
29	6,788	161	0	0	0
30	6,789	161	0	0	-9
31	6,857	161	0	0	0
32	7,080	161	0	0	0
33	7,258	161	100	0	0
34	7,353	161	100	0	5
35	7,226	161	100	0	5
36	7,166	161	70	0	0
37	7,263	161	0	0	0
38	7,444	161	0	0	0
39	7,533	161	0	0	0
40	7,554	161	0	0	0
41	7,550	161	0	0	0
42	7,512	161	0	0	0
43	7,443	161	0	0	0
44	7,308	161	0	0	0
45	7,154	161	0	0	0
46	7,021	161	0	0	0
47	6,867	161	0	0	0
48	6,649	161	0	0	0

Disclaimer

This Report is prepared and provided for general information purposes only. Information in this Report was obtained or derived from sources that the Energy Market Company Pte Ltd (EMC) considers reliable. All reasonable care has been taken to ensure that stated facts are accurate and opinions fair and reasonable at time of printing. EMC does not represent that information in this Report is accurate or complete and it should not be relied upon as such. In particular, in presentation of charts, certain assumptions were made which may not be stated therein. As such, EMC assumes no fiduciary responsibility or liability for any construction or interpretation you may take based on the information contained nor for any consequences, financial or otherwise, from transactions where information in this Report may be relied upon. You should make your own appraisal and should consult, to the extent necessary, your own professional advisors to ensure that any decision made based on the information in this Report is suitable for your circumstances. If you have any specific queries about this Report or its contents, you should contact us at marketoperations-B@emcsg.com.