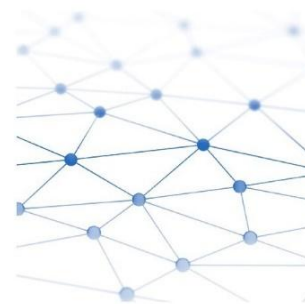
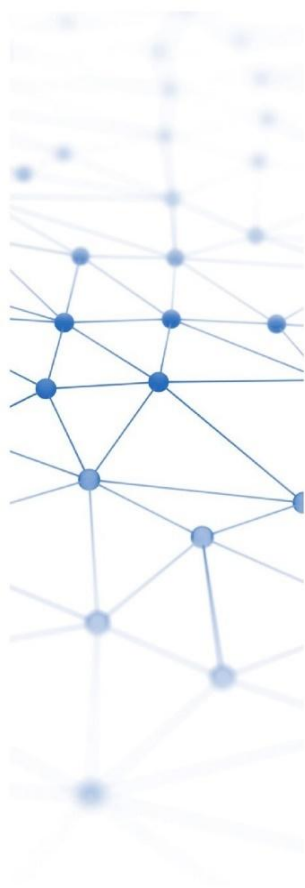


Daily Trading Report

11 May 2025



Market Overview

Figure 1: Forecasted Demand vs USEP

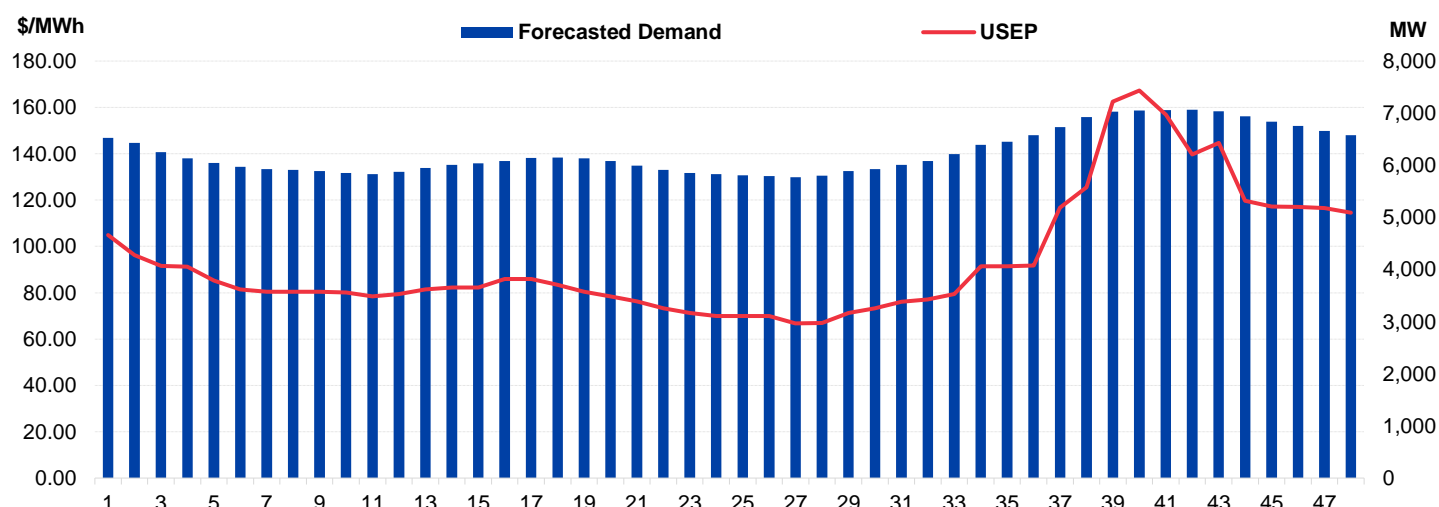


Figure 2: Periodic Ancillary Prices

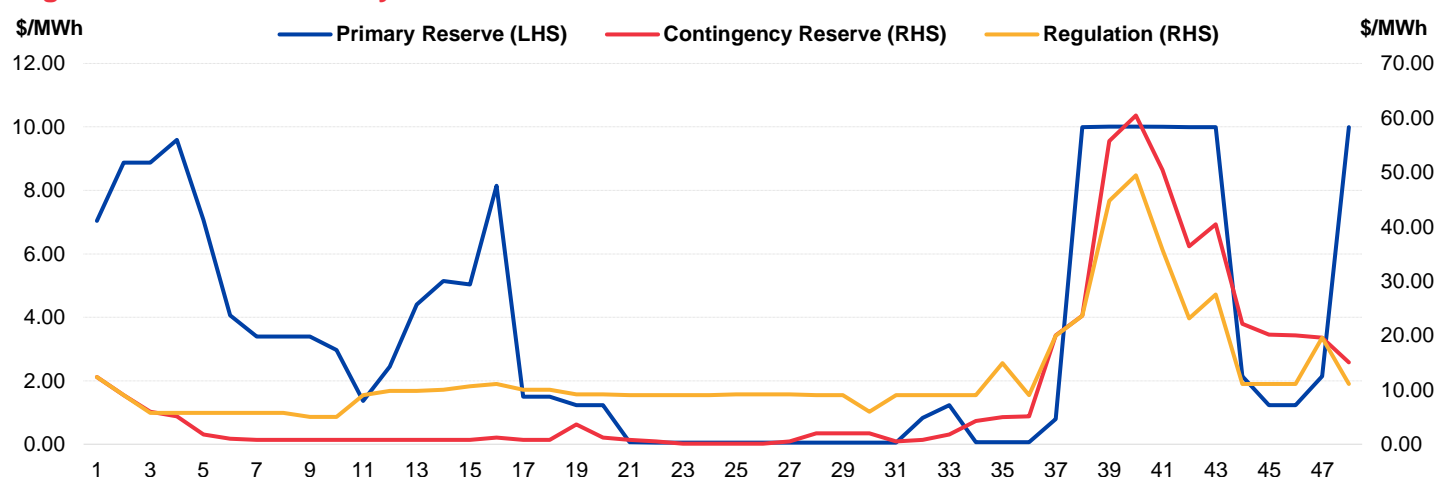


Figure 3: Daily Data Comparison

	Forecasted Demand (MW)	Total Supply (MW)	Energy Price (\$/MWh)
PH/Sunday Ranking*	15 out of 1420	197 out of 1420	938 out of 1420
Daily Average	6,254	7,678	93.85
Previous day	6,555	7,671	103.93
Change (%)	-4.6%	0.1%	-9.7%
Daily Max	7,064	7,832	167.28
Previous day	7,088	7,831	191.21
Change (%)	-0.3%	0.0%	-12.5%
Daily Min	5,774	7,462	66.76
Previous day	6,055	7,445	78.89
Change (%)	-4.6%	0.2%	-15.4%

	Primary Reserve Price (\$/MWh)	Contingency Reserve Price (\$/MWh)	Regulation Price (\$/MWh)
Daily Average	3.56	9.57	12.51
Previous day	4.28	15.65	13.91
Change (%)	-16.8%	-38.8%	-10.1%
Daily Max	10.01	60.44	49.44
Previous day	11.11	80.77	59.20
Change (%)	-9.9%	-25.2%	-16.5%
Daily Min	0.05	0.10	5.02
Previous day	0.06	3.66	5.02
Change (%)	-16.7%	-97.3%	0.0%

*Ranking denotes the relative position of the market parameter since 1 Jan 2003.

Market Overview

Figure 4: Seven Days of Daily USEP vs Daily Forecasted Demand

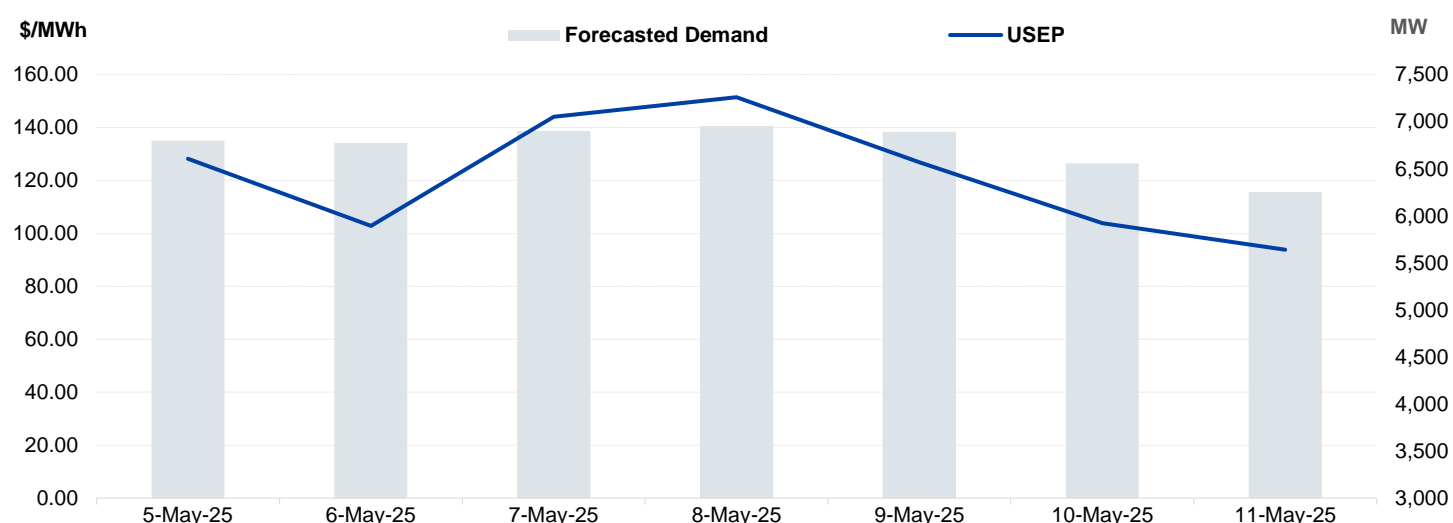


Figure 5: Seven Days USEP Average-Max-Min

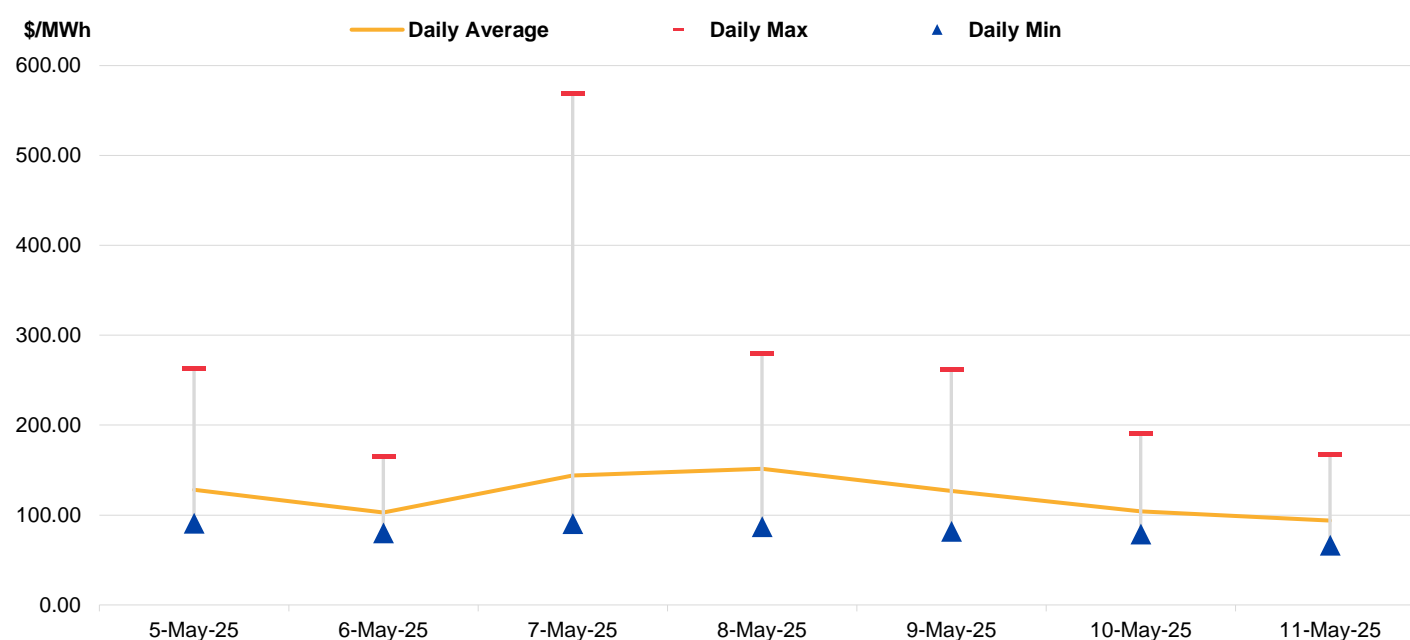
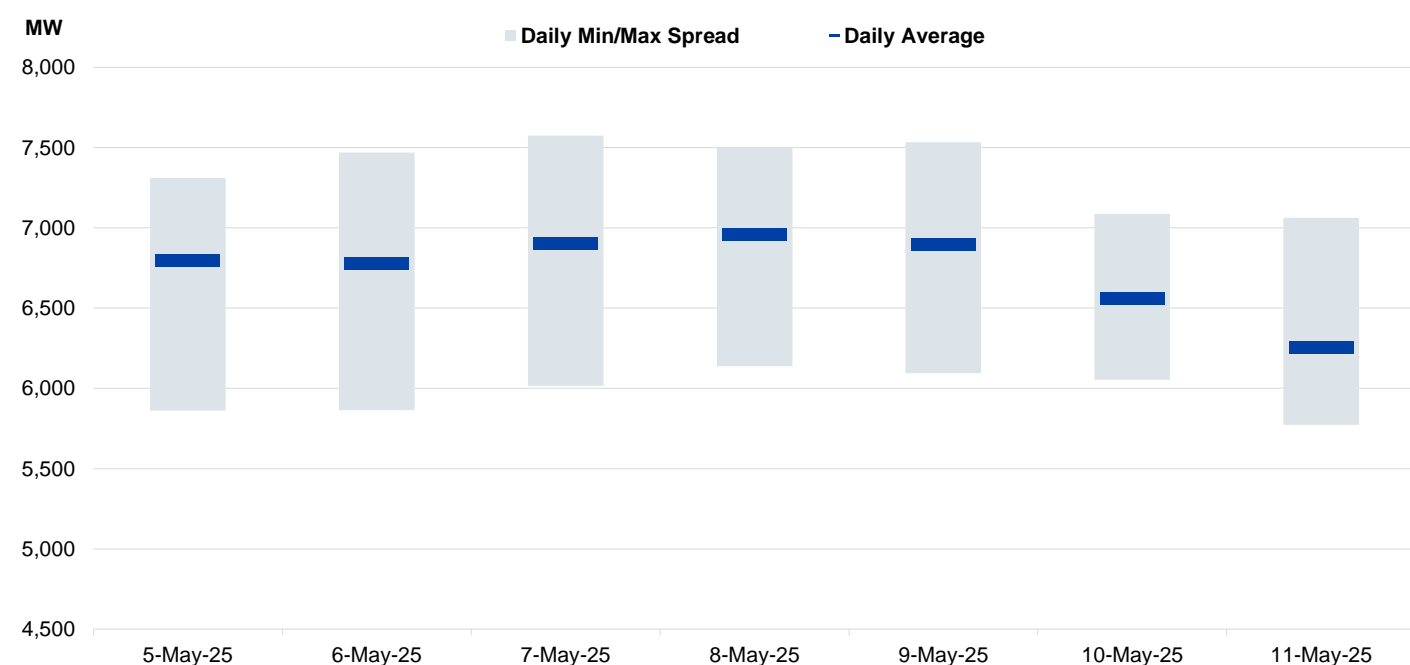
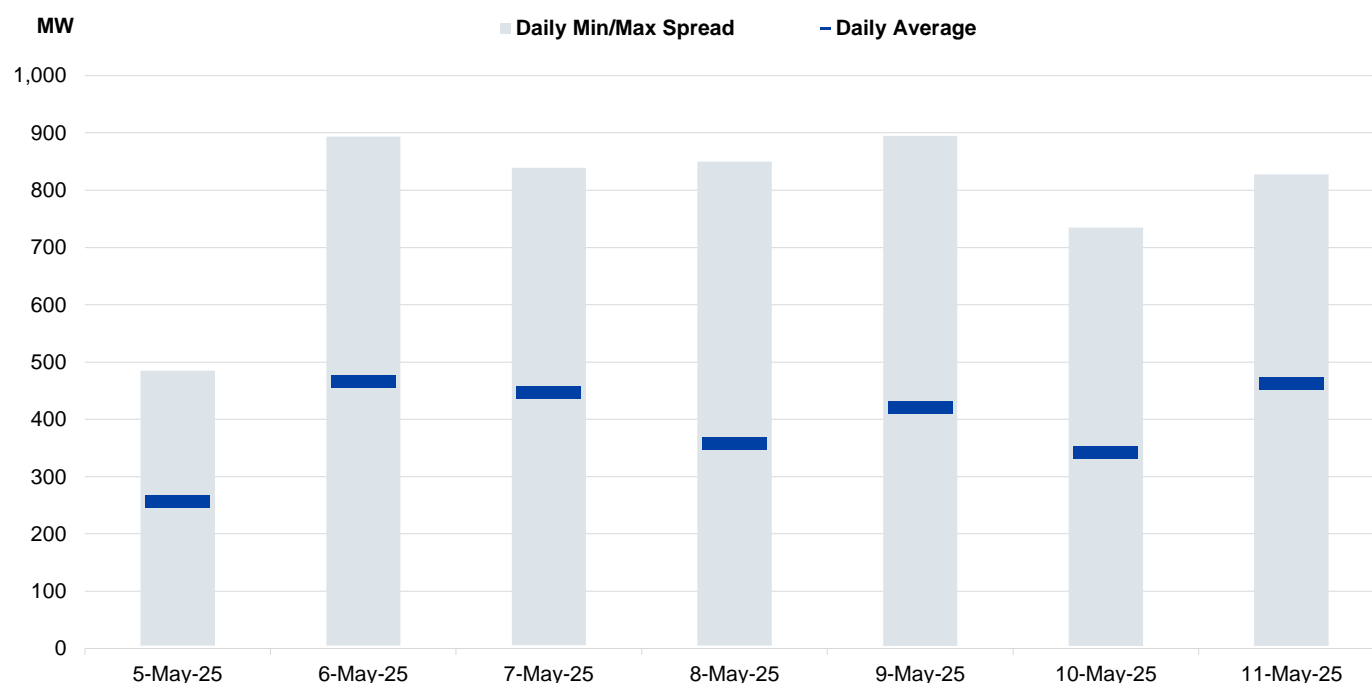


Figure 6: Seven Days Forecasted Demand Average-Max-Min



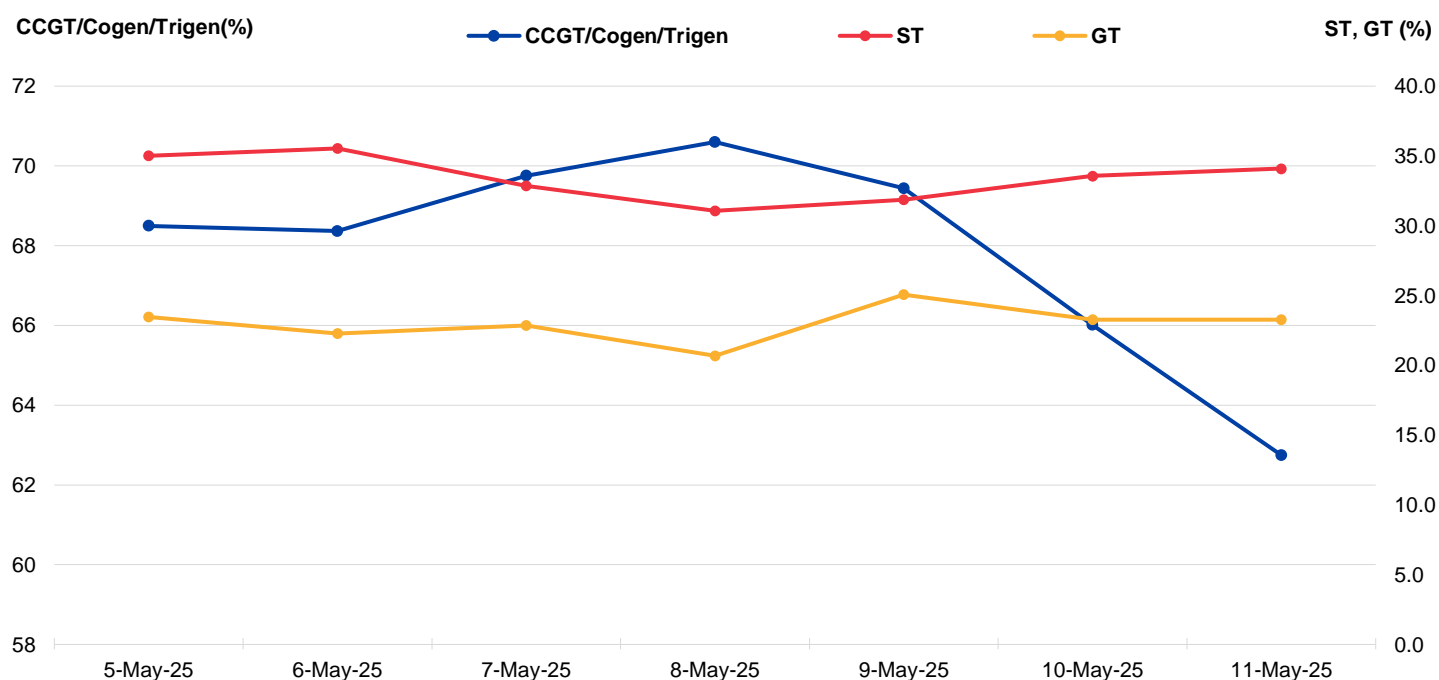
Market Overview

Figure 7: Seven Days Forecasted Solar Average-Max-Min



Notes: Figure 7 reflects the daily forecasted solar for periods between 15 and 38 for the past seven days.

Figure 8: Daily Generation Plant Utilization Rate



Market Overview

Figure 9: Daily Trading Data Table

	Mon 05-May-25	Tue 06-May-25	Wed 07-May-25	Thu 08-May-25	Fri 09-May-25	Sat 10-May-25	Sun 11-May-25
Forecasted Demand (MW)							
Daily Average	6,797	6,774	6,900	6,953	6,893	6,555	6,254
Daily Maximum	7,311	7,469	7,576	7,500	7,533	7,088	7,064
Daily Minimum	5,862	5,863	6,014	6,139	6,094	6,055	5,774
Forecasted Solar (MW)							
Daily Average	256	466	447	358	420	343	462
Daily Maximum	485	893	839	850	895	735	828
Daily Minimum	5	5	6	5	4	5	4
Total Supply (MW)							
Daily Average	7,730	8,152	7,988	7,840	8,016	7,671	7,678
Daily Maximum	8,187	8,291	8,254	8,009	8,257	7,831	7,832
Daily Minimum	7,254	7,953	7,689	7,559	7,681	7,445	7,462
Energy Price (\$/MWh)							
Daily Average	128.14	102.90	144.12	151.46	126.93	103.93	93.85
Daily Maximum	262.55	164.72	569.59	280.12	262.45	191.21	167.28
Daily Minimum	91.24	80.20	90.48	87.22	82.26	78.89	66.76
Reserve & Regulation Prices (\$/MWh)							
Primary	3.03	1.27	2.94	4.22	3.42	4.28	3.56
Contingency	21.18	14.01	26.69	30.70	13.59	15.65	9.57
Regulation	15.00	9.32	16.78	19.80	10.25	13.91	12.51
Reserve & Regulation Requirement (MW)							
Primary	172	167	162	163	163	176	175
Contingency	414	407	408	410	409	412	399
Regulation	108	108	108	108	108	108	108
Generation (MW)							
CCGT/Cogen/Trigen	6,417	6,405	6,535	6,614	6,505	6,184	5,879
ST	134	136	126	119	122	128	130
GT	245	232	238	216	261	242	242
Import	32	30	32	35	36	30	31

Notes: Figure 9 reflects the daily forecasted solar for periods between 15 and 38.

Daily Trading Report

Trading Date: Sunday, 11 May 2025

Page 4 of 6

Periodic Trading Data

Figure 10: Periodic Trading Data Table

Period	USEP (\$/MWh)	Forecasted Demand (MW)	Forecasted Solar (MW)	RUSEP (\$/MWh)	MAP (\$/MWh)	MAPT (\$/MWh)	TPC Applied
1	\$104.96	6,527	0	\$104.96	\$104.21	\$476.40	No
2	\$96.31	6,427	0	\$96.31	\$104.31	\$476.40	No
3	\$91.64	6,253	0	\$91.64	\$104.21	\$476.40	No
4	\$91.31	6,134	0	\$91.31	\$104.20	\$476.40	No
5	\$85.32	6,044	0	\$85.32	\$104.07	\$476.40	No
6	\$81.49	5,973	0	\$81.49	\$103.87	\$476.40	No
7	\$80.48	5,927	0	\$80.48	\$103.64	\$476.40	No
8	\$80.47	5,911	0	\$80.47	\$103.41	\$476.40	No
9	\$80.47	5,893	0	\$80.47	\$103.19	\$476.40	No
10	\$80.03	5,851	0	\$80.03	\$102.95	\$476.40	No
11	\$78.40	5,827	0	\$78.40	\$102.68	\$476.40	No
12	\$79.50	5,876	0	\$79.50	\$102.43	\$476.40	No
13	\$81.49	5,950	0	\$81.49	\$102.22	\$476.40	No
14	\$82.25	6,009	0	\$82.25	\$101.93	\$476.40	No
15	\$82.26	6,040	4	\$82.26	\$101.63	\$476.40	No
16	\$85.87	6,085	16	\$85.87	\$101.31	\$476.40	No
17	\$85.98	6,140	40	\$85.98	\$100.77	\$476.40	No
18	\$83.45	6,147	107	\$83.45	\$100.24	\$476.40	No
19	\$80.44	6,137	206	\$80.44	\$100.01	\$476.40	No
20	\$78.42	6,085	326	\$78.42	\$99.74	\$476.40	No
21	\$76.33	5,993	491	\$76.33	\$99.42	\$476.40	No
22	\$73.19	5,913	596	\$73.19	\$99.04	\$476.40	No
23	\$71.31	5,855	679	\$71.31	\$98.70	\$476.40	No
24	\$69.97	5,830	736	\$69.97	\$98.38	\$476.40	No
25	\$69.97	5,806	764	\$69.97	\$98.16	\$476.40	No
26	\$70.00	5,792	776	\$70.00	\$97.97	\$476.40	No
27	\$66.76	5,774	808	\$66.76	\$97.71	\$476.40	No
28	\$66.88	5,802	828	\$66.88	\$97.46	\$476.40	No
29	\$71.32	5,889	770	\$71.32	\$97.30	\$476.40	No
30	\$73.21	5,926	776	\$73.21	\$96.99	\$476.40	No
31	\$76.04	6,011	729	\$76.04	\$96.67	\$476.40	No
32	\$77.15	6,080	686	\$77.15	\$96.29	\$476.40	No
33	\$79.41	6,217	563	\$79.41	\$95.55	\$476.40	No
34	\$91.37	6,392	407	\$91.37	\$95.02	\$476.40	No
35	\$91.48	6,450	367	\$91.48	\$94.50	\$476.40	No
36	\$91.70	6,579	243	\$91.70	\$93.97	\$476.40	No
37	\$116.63	6,733	138	\$116.63	\$93.79	\$476.40	No
38	\$125.50	6,927	33	\$125.50	\$93.47	\$476.40	No
39	\$162.55	7,029	1	\$162.55	\$93.70	\$476.40	No
40	\$167.28	7,048	0	\$167.28	\$93.21	\$476.40	No
41	\$156.89	7,060	0	\$156.89	\$93.35	\$476.40	No
42	\$139.74	7,064	0	\$139.74	\$93.34	\$476.40	No
43	\$144.65	7,037	0	\$144.65	\$93.74	\$476.40	No
44	\$119.70	6,942	0	\$119.70	\$93.74	\$476.40	No
45	\$117.18	6,835	0	\$117.18	\$93.74	\$476.40	No
46	\$117.04	6,755	0	\$117.04	\$93.75	\$476.40	No
47	\$116.61	6,658	0	\$116.61	\$93.79	\$476.40	No
48	\$114.57	6,577	0	\$114.57	\$93.85	\$476.40	No

Periodic Trading Data

Figure 11 (cont'd): Periodic Trading Data Table

Period	Generation (MW)			
	CCGT/Cogen/Trigen	ST	GT	Import
1	6,193	133	205	30
2	6,091	133	205	30
3	5,915	133	205	30
4	5,796	133	205	30
5	5,705	133	205	30
6	5,632	133	205	30
7	5,586	133	205	30
8	5,571	133	205	30
9	5,551	133	205	30
10	5,515	128	205	30
11	5,490	128	205	30
12	5,540	128	205	30
13	5,614	128	205	30
14	5,673	128	205	30
15	5,703	128	205	30
16	5,749	128	205	30
17	5,804	128	205	30
18	5,811	128	205	30
19	5,666	128	341	30
20	5,613	128	341	30
21	5,515	134	341	30
22	5,434	134	341	30
23	5,375	134	341	30
24	5,350	134	341	30
25	5,326	134	341	30
26	5,311	134	341	30
27	5,293	134	341	30
28	5,321	134	341	30
29	5,409	134	341	30
30	5,452	129	341	30
31	5,538	129	341	30
32	5,609	129	341	30
33	5,747	129	341	30
34	6,094	129	170	30
35	6,152	129	170	30
36	6,283	129	170	30
37	6,437	129	170	30
38	6,629	129	170	30
39	6,719	129	170	30
40	6,739	129	170	30
41	6,716	129	205	30
42	6,698	129	205	60
43	6,699	129	205	30
44	6,611	129	205	30
45	6,505	129	205	30
46	6,423	129	205	30
47	6,325	129	205	30
48	6,243	129	205	30

Disclaimer

This Report is prepared and provided for general information purposes only. Information in this Report was obtained or derived from sources that the Energy Market Company Pte Ltd (EMC) considers reliable. All reasonable care has been taken to ensure that stated facts are accurate and opinions fair and reasonable at time of printing. EMC does not represent that information in this Report is accurate or complete and it should not be relied upon as such. In particular, in presentation of charts, certain assumptions were made which may not be stated therein. As such, EMC assumes no fiduciary responsibility or liability for any construction or interpretation you may take based on the information contained nor for any consequences, financial or otherwise, from transactions where information in this Report may be relied upon. You should make your own appraisal and should consult, to the extent necessary, your own professional advisors to ensure that any decision made based on the information in this Report is suitable for your circumstances. If you have any specific queries about this Report or its contents, you should contact us at marketoperations-B@emcsg.com.