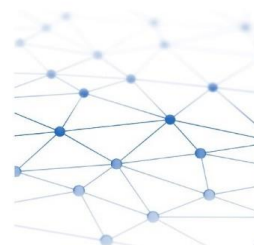
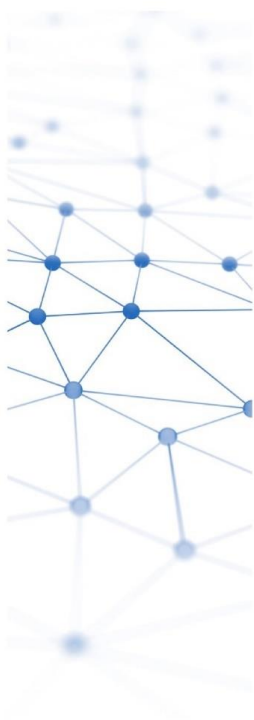


Daily Trading Report

10 May 2025



Market Overview

Figure 1: Forecasted Demand vs USEP

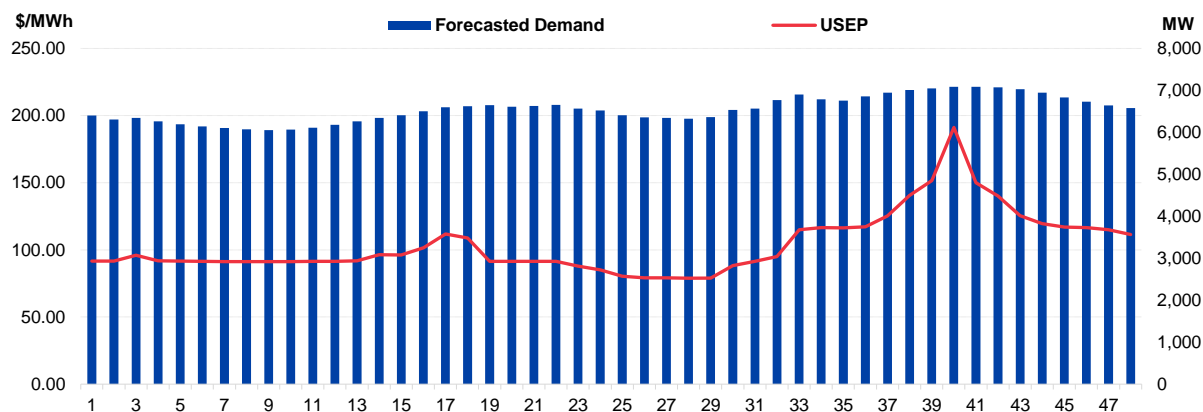


Figure 2: Periodic Ancillary Prices

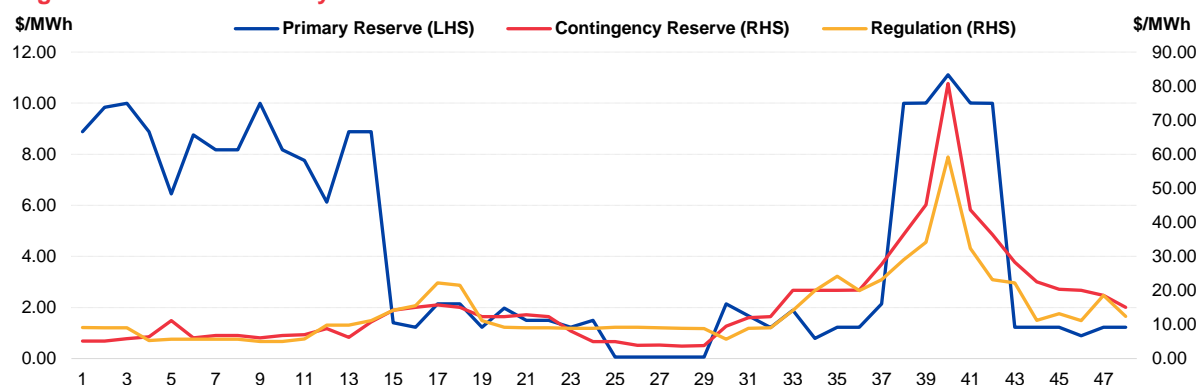


Figure 3: Daily Data Comparison

	Forecasted Demand (MW)	Total Supply (MW)	Energy Price (\$/MWh)
Saturday Ranking*	1 out of 1137	217 out of 1137	695 out of 1137
Daily Average	6,555	7,671	103.93
Previous day	6,893	8,016	126.93
Change (%)	-4.9%	-4.3%	-18.1%
Daily Max	7,088	7,831	191.21
Previous day	7,533	8,257	262.45
Change (%)	-5.9%	-5.2%	-27.1%
Daily Min	6,055	7,445	78.89
Previous day	6,094	7,681	82.26
Change (%)	-0.6%	-3.1%	-4.1%

	Primary Reserve Price (\$/MWh)	Contingency Reserve Price (\$/MWh)	Regulation Price (\$/MWh)
Daily Average	4.28	15.65	13.91
Previous day	3.42	13.59	10.25
Change (%)	25.1%	15.1%	35.8%
Daily Max	11.11	80.77	59.20
Previous day	10.00	45.00	35.46
Change (%)	11.1%	79.5%	66.9%
Daily Min	0.06	3.66	5.02
Previous day	0.02	1.23	5.02
Change (%)	200.0%	197.6%	0.0%

*Ranking denotes the relative position of the market parameter since 1 Jan 2003.

Market Overview

Figure 4: Seven Days of Daily USEP vs Daily Forecasted Demand

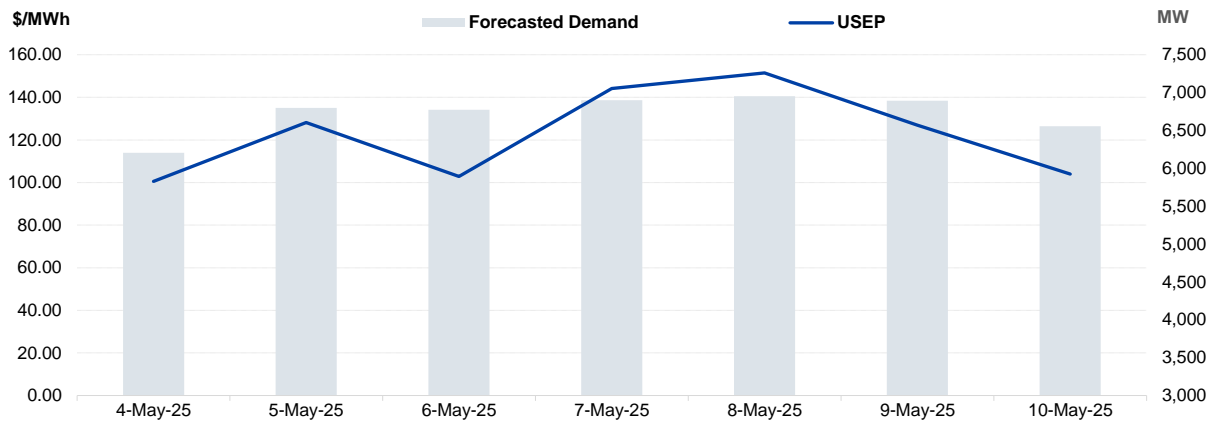


Figure 5: Seven Days USEP Average-Max-Min

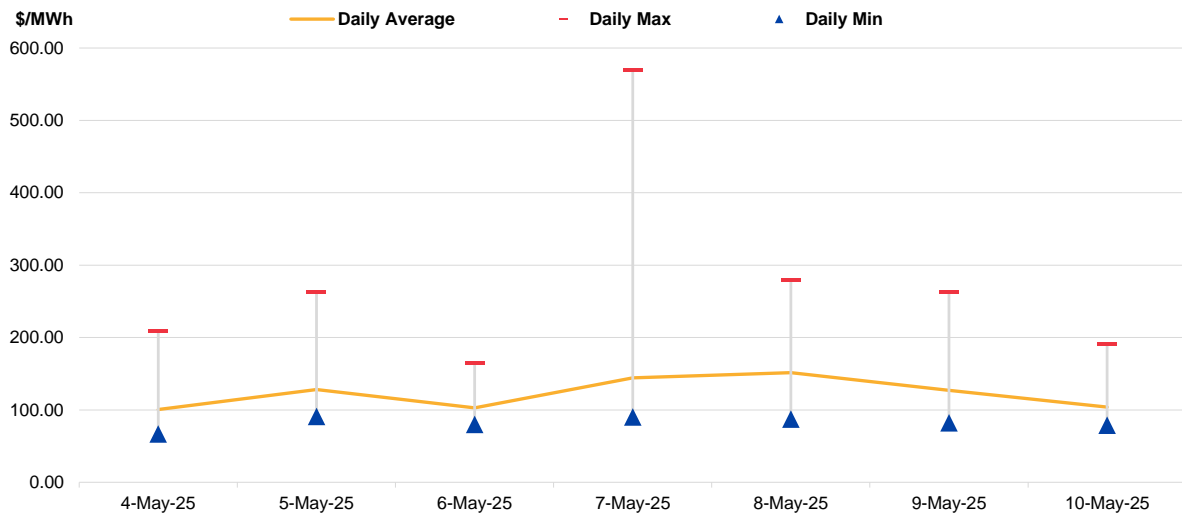
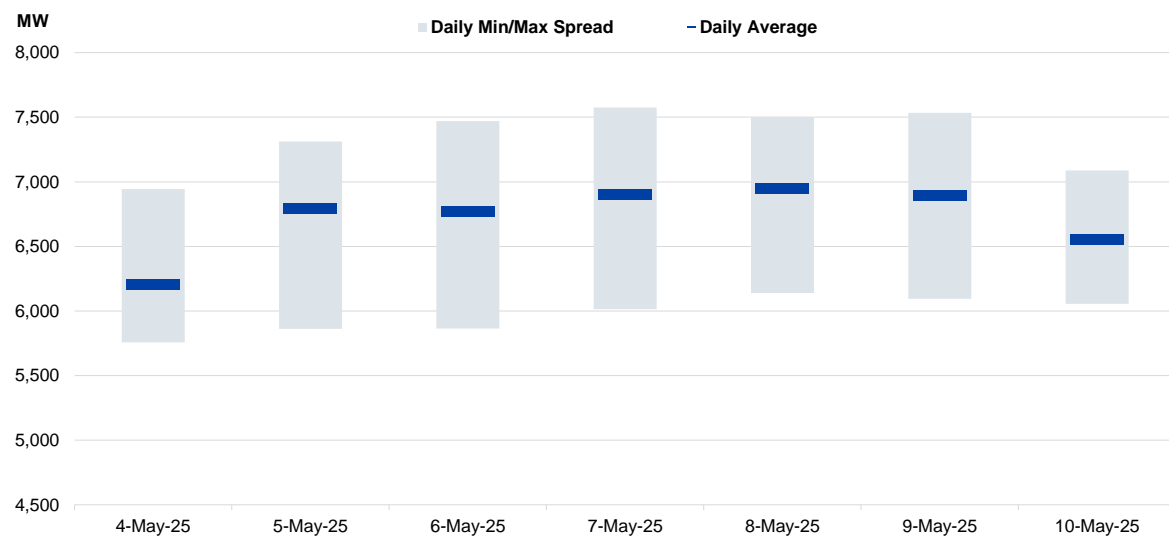
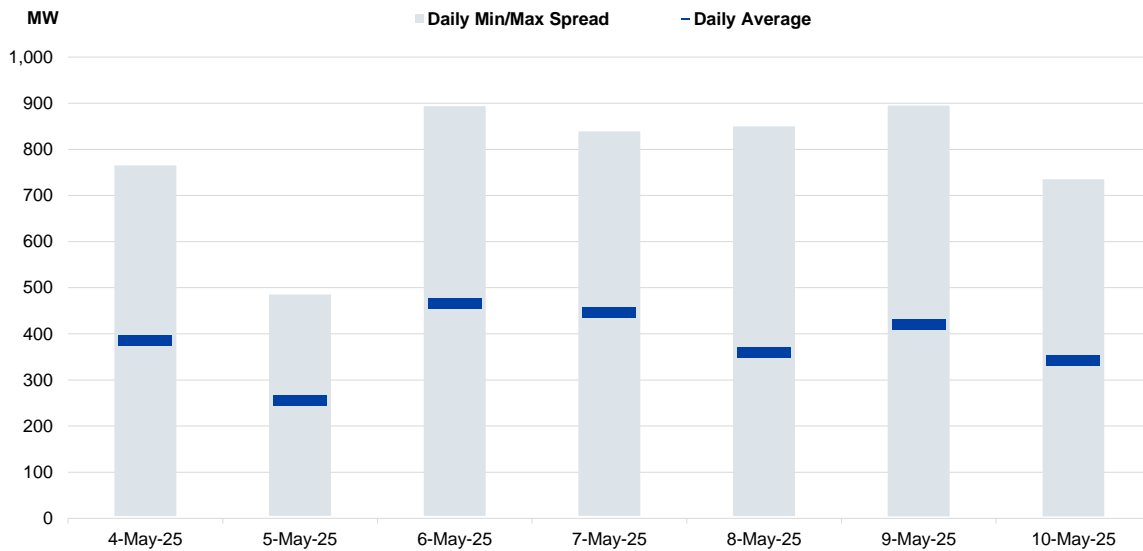


Figure 6: Seven Days Forecasted Demand Average-Max-Min



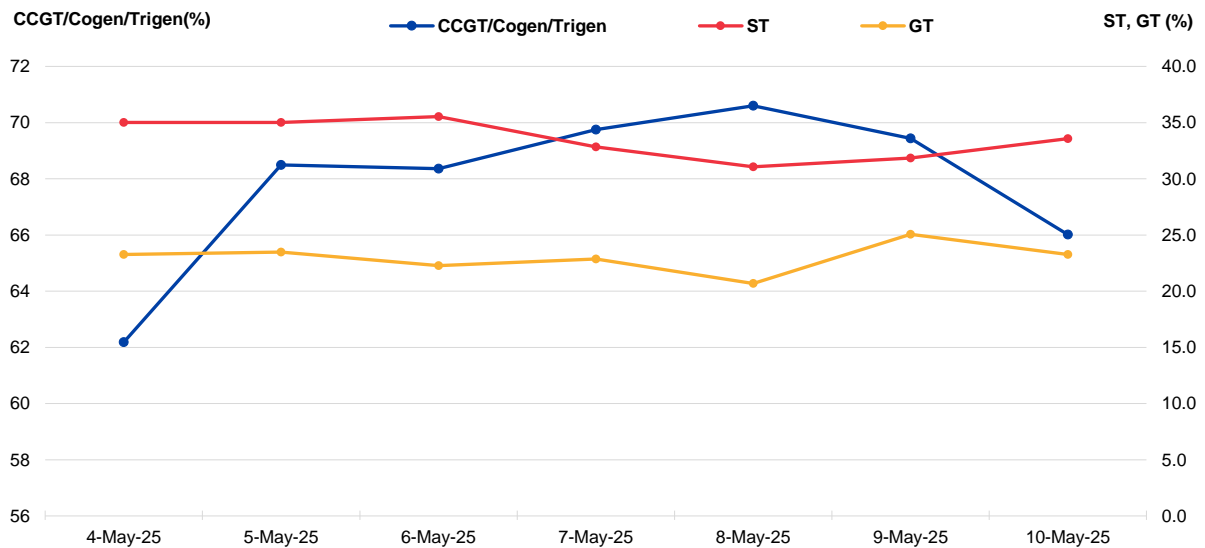
Market Overview

Figure 7: Seven Days Forecasted Solar Average-Max-Min



Notes: Figure 7 reflects the daily forecasted solar for periods between 15 and 38 for the past seven days.

Figure 8: Daily Generation Plant Utilization Rate



Market Overview

Figure 9: Daily Trading Data Table

	Sun 04-May-25	Mon 05-May-25	Tue 06-May-25	Wed 07-May-25	Thu 08-May-25	Fri 09-May-25	Sat 10-May-25
Forecasted Demand (MW)							
Daily Average	6,205	6,797	6,774	6,900	6,953	6,893	6,555
Daily Maximum	6,944	7,311	7,469	7,576	7,500	7,533	7,088
Daily Minimum	5,757	5,862	5,863	6,014	6,139	6,094	6,055
Forecasted Solar (MW)							
Daily Average	386	256	466	447	358	420	343
Daily Maximum	765	485	893	839	850	895	735
Daily Minimum	5	5	5	6	5	4	5
Total Supply (MW)							
Daily Average	7,555	7,730	8,152	7,988	7,840	8,016	7,671
Daily Maximum	7,727	8,187	8,291	8,254	8,009	8,257	7,831
Daily Minimum	7,362	7,254	7,953	7,689	7,559	7,681	7,445
Energy Price (\$/MWh)							
Daily Average	100.53	128.14	102.90	144.12	151.46	126.93	103.93
Daily Maximum	208.75	262.55	164.72	569.59	280.12	262.45	191.21
Daily Minimum	66.95	91.24	80.20	90.48	87.22	82.26	78.89
Reserve & Regulation Prices (\$/MWh)							
Primary	3.54	3.03	1.27	2.94	4.22	3.42	4.28
Contingency	7.71	21.18	14.01	26.69	30.70	13.59	15.65
Regulation	11.14	15.00	9.32	16.78	19.80	10.25	13.91
Reserve & Regulation Requirement (MW)							
Primary	183	172	167	162	163	163	176
Contingency	403	414	407	408	410	409	412
Regulation	108	108	108	108	108	108	108
Generation (MW)							
CCGT/Cogen/Trigen	5,826	6,417	6,405	6,535	6,614	6,505	6,184
ST	134	134	136	126	119	122	128
GT	242	245	232	238	216	261	242
Import	30	32	30	32	35	36	30

Notes: Figure 9 reflects the daily forecasted solar for periods between 15 and 38.

Periodic Trading Data

Figure 10: Periodic Trading Data Table

Period	USEP (\$/MWh)	Forecasted Demand (MW)	Forecasted Solar (MW)	RUSEP (\$/MWh)	MAP (\$/MWh)	MAPT (\$/MWh)	TPC Applied
1	\$91.67	6,402	0	\$91.67	\$125.70	\$476.40	No
2	\$91.58	6,305	0	\$91.58	\$125.00	\$476.40	No
3	\$96.02	6,347	0	\$96.02	\$124.79	\$476.40	No
4	\$91.76	6,266	0	\$91.76	\$124.70	\$476.40	No
5	\$91.62	6,196	0	\$91.62	\$124.62	\$476.40	No
6	\$91.45	6,142	0	\$91.45	\$124.58	\$476.40	No
7	\$91.30	6,102	0	\$91.30	\$124.58	\$476.40	No
8	\$91.30	6,075	0	\$91.30	\$124.57	\$476.40	No
9	\$91.32	6,055	0	\$91.32	\$124.57	\$476.40	No
10	\$91.29	6,068	0	\$91.29	\$124.48	\$476.40	No
11	\$91.38	6,109	0	\$91.38	\$124.38	\$476.40	No
12	\$91.51	6,181	0	\$91.51	\$124.19	\$476.40	No
13	\$91.75	6,265	0	\$91.75	\$123.93	\$476.40	No
14	\$96.35	6,344	0	\$96.35	\$123.61	\$476.40	No
15	\$96.25	6,411	5	\$96.25	\$123.22	\$476.40	No
16	\$101.56	6,504	17	\$101.56	\$122.72	\$476.40	No
17	\$111.84	6,597	56	\$111.84	\$122.44	\$476.40	No
18	\$108.79	6,623	149	\$108.79	\$121.77	\$476.40	No
19	\$91.53	6,651	236	\$91.53	\$121.61	\$476.40	No
20	\$91.51	6,609	368	\$91.51	\$121.60	\$476.40	No
21	\$91.41	6,632	434	\$91.41	\$121.60	\$476.40	No
22	\$91.51	6,657	479	\$91.51	\$121.60	\$476.40	No
23	\$87.87	6,565	598	\$87.87	\$121.64	\$476.40	No
24	\$85.10	6,522	632	\$85.10	\$121.63	\$476.40	No
25	\$80.46	6,411	678	\$80.46	\$121.59	\$476.40	No
26	\$79.11	6,359	699	\$79.11	\$121.44	\$476.40	No
27	\$79.20	6,343	723	\$79.20	\$121.30	\$476.40	No
28	\$78.89	6,325	735	\$78.89	\$121.23	\$476.40	No
29	\$79.08	6,364	619	\$79.08	\$120.88	\$476.40	No
30	\$88.31	6,533	442	\$88.31	\$120.32	\$476.40	No
31	\$91.42	6,567	399	\$91.42	\$120.17	\$476.40	No
32	\$95.04	6,772	243	\$95.04	\$120.15	\$476.40	No
33	\$115.08	6,900	128	\$115.08	\$120.50	\$476.40	No
34	\$116.65	6,790	192	\$116.65	\$120.49	\$476.40	No
35	\$116.48	6,755	209	\$116.48	\$118.64	\$476.40	No
36	\$117.22	6,861	114	\$117.22	\$115.62	\$476.40	No
37	\$125.38	6,947	51	\$125.38	\$113.55	\$476.40	No
38	\$140.60	7,009	19	\$140.60	\$111.01	\$476.40	No
39	\$151.57	7,046	1	\$151.57	\$108.70	\$476.40	No
40	\$191.21	7,087	0	\$191.21	\$107.32	\$476.40	No
41	\$149.92	7,088	0	\$149.92	\$106.09	\$476.40	No
42	\$140.21	7,071	0	\$140.21	\$104.66	\$476.40	No
43	\$125.48	7,029	0	\$125.48	\$104.03	\$476.40	No
44	\$119.58	6,946	0	\$119.58	\$103.91	\$476.40	No
45	\$117.07	6,836	0	\$117.07	\$103.73	\$476.40	No
46	\$116.60	6,734	0	\$116.60	\$103.72	\$476.40	No
47	\$114.97	6,640	0	\$114.97	\$103.68	\$476.40	No
48	\$111.42	6,581	0	\$111.42	\$103.93	\$476.40	No

Periodic Trading Data

Figure 11 (cont'd): Periodic Trading Data Table

Period	Generation (MW)			
	CCGT/Cogen/Trigen	ST	GT	Import
1	6,076	124	205	30
2	5,978	124	205	30
3	6,021	124	205	30
4	5,938	124	205	30
5	5,867	124	205	30
6	5,813	124	205	30
7	5,772	124	205	30
8	5,745	124	205	30
9	5,724	124	205	30
10	5,737	124	205	30
11	5,779	124	205	30
12	5,851	124	205	30
13	5,936	124	205	30
14	6,016	124	205	30
15	6,082	124	205	30
16	6,176	124	205	30
17	6,268	124	205	30
18	6,296	124	205	30
19	6,189	124	341	30
20	6,147	124	341	30
21	6,170	124	341	30
22	6,191	128	341	30
23	6,098	128	341	30
24	6,055	128	341	30
25	5,943	128	341	30
26	5,891	128	341	30
27	5,876	128	341	30
28	5,852	133	341	30
29	5,892	133	341	30
30	6,062	133	341	30
31	6,095	133	341	30
32	6,303	133	341	30
33	6,430	133	341	30
34	6,489	133	170	30
35	6,454	133	170	30
36	6,561	133	170	30
37	6,645	133	170	30
38	6,702	133	170	30
39	6,735	133	170	30
40	6,775	133	170	30
41	6,743	133	205	30
42	6,729	133	205	30
43	6,693	133	205	30
44	6,612	133	205	30
45	6,501	133	205	30
46	6,398	133	205	30
47	6,303	133	205	30
48	6,243	133	205	30

Disclaimer

This Report is prepared and provided for general information purposes only. Information in this Report was obtained or derived from sources that the Energy Market Company Pte Ltd (EMC) considers reliable. All reasonable care has been taken to ensure that stated facts are accurate and opinions fair and reasonable at time of printing. EMC does not represent that information in this Report is accurate or complete and it should not be relied upon as such. In particular, in presentation of charts, certain assumptions were made which may not be stated therein. As such, EMC assumes no fiduciary responsibility or liability for any construction or interpretation you may take based on the information contained nor for any consequences, financial or otherwise, from transactions where information in this Report may be relied upon. You should make your own appraisal and should consult, to the extent necessary, your own professional advisors to ensure that any decision made based on the information in this Report is suitable for your circumstances. If you have any specific queries about this Report or its contents, you should contact us at marketoperations-B@emcsg.com.